

## DESCRIPTION

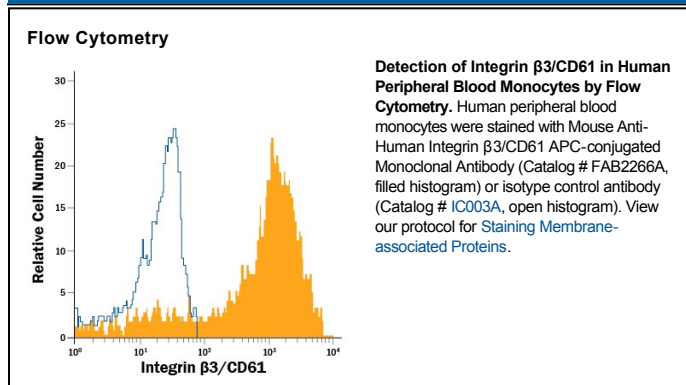
|                           |  |
|---------------------------|--|
| <b>Species Reactivity</b> | Human  |
| <b>Specificity</b>        | Detects human Integrin $\beta 3/CD61$ in direct ELISAs and Western blots. In direct ELISAs, no cross-reactivity with recombinant human Integrin $\beta 1$ , $\beta 2$ , recombinant mouse Integrin $\beta 4$ , or $\beta 6$ is observed.   |
| <b>Source</b>             | Monoclonal Mouse IgG <sub>2A</sub> Clone # 256809  |
| <b>Purification</b>       | Protein A or G purified from hybridoma culture supernatant   |
| <b>Immunogen</b>          | Chinese hamster ovary cell line CHO-derived recombinant human Integrin $\beta 3/CD61$<br>Gly27-Asp718<br>Accession # P05106  |
| <b>Conjugate</b>          | Allophycocyanin<br>Excitation Wavelength: 620-650 nm<br>Emission Wavelength: 660-670 nm  |
| <b>Formulation</b>        | Supplied in a saline solution containing BSA and Sodium Azide. See Certificate of Analysis for details.<br><br>*Contains <0.1% Sodium Azide, which is not hazardous at this concentration according to GHS classifications. Refer to the Safety Data Sheet (SDS) for additional information and handling instructions. |

## APPLICATIONS

**Please Note:** Optimal dilutions should be determined by each laboratory for each application. *General Protocols* are available in the *Technical Information* section on our website.

|                       | Recommended Concentration        | Sample    |
|-----------------------|----------------------------------|-----------|
| <b>Flow Cytometry</b> | 10 $\mu$ L/10 <sup>6</sup> cells | See Below |

## DATA



## PREPARATION AND STORAGE

|                                |  |
|--------------------------------|--|
| <b>Shipping</b>                | The product is shipped with polar packs. Upon receipt, store it immediately at the temperature recommended below.                                  |
| <b>Stability &amp; Storage</b> | <b>Protect from light. Do not freeze.</b> <ul style="list-style-type: none"> <li>12 months from date of receipt, 2 to 8 °C as supplied.</li> </ul> |

## BACKGROUND

Integrin  $\beta 3$ , also called CD61, associates with the Integrin  $\alpha IIb$  or  $\alpha V$  subunits to form heterodimeric receptors for collagens, fibronectin, vitronectin, fibrinogen, Von willebrand factor or thrombospondin.  $\alpha IIb/\beta 3$ , also known as GPIIb/IIIa (Glycoprotein IIb-IIIa), is expressed on platelets.  $\alpha V/\beta 3$ , also known as vitronectin receptor, is expressed on endothelial cells, some B cells, platelets and monocytes.