

DESCRIPTION

| | |
|---------------------------|---|
| Species Reactivity | Human/Mouse |
| Specificity | Detects human and mouse SSEA-1. |
| Source | Monoclonal Mouse IgM Clone # MC-480 |
| Purification | IgM-specific Affinity-purified from hybridoma culture supernatant |
| Immunogen | F9 mouse teratocarcinoma stem cells |
| Conjugate | Alexa Fluor 488 Excitation Wavelength: 488 nm Emission Wavelength: 515-545 nm |
| Formulation | Supplied 0.2 mg/mL in a saline solution containing BSA and Sodium Azide. |

*Contains <0.1% Sodium Azide, which is not hazardous at this concentration according to GHS classifications. Refer to the Safety Data Sheet (SDS) for additional information and handling instructions.

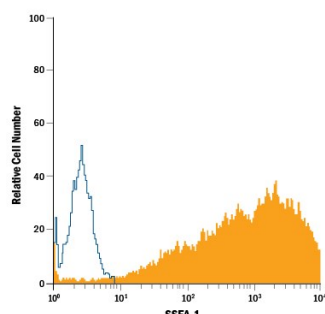
APPLICATIONS

Please Note: Optimal dilutions should be determined by each laboratory for each application. [General Protocols](#) are available in the Technical Information section on our website.

Flow Cytometry Titration recommended for optimal concentration with starting range of 0.1-1 µg/1 million cells. Samples used for this experiment were D3 mouse embryonic stem cell line and Whole blood granulocytes.

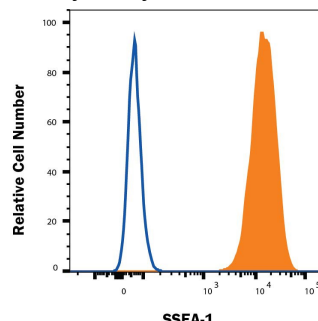
DATA

Flow Cytometry



Detection of SSEA-1 in D3 Mouse Cell Line by Flow Cytometry. D3 mouse embryonic stem cell line was stained with Mouse Anti-Human/Mouse SSEA-1 Alexa Fluor® 488-conjugated Monoclonal Antibody (Catalog # FAB2155G, filled histogram) or isotype control antibody (Catalog # IC015G, open histogram). View our protocol for [Staining Membrane-associated Proteins](#).

Flow Cytometry



Detection of SSEA-1 in Whole blood granulocytes by Flow Cytometry. Whole blood granulocytes were stained with Mouse Anti-Human/Mouse SSEA-1 Alexa Fluor® 488-conjugated Monoclonal Antibody (Catalog # FAB2155G, filled histogram) or isotype control antibody (Catalog # IC015G, open histogram). View our protocol for [Staining Membrane-associated Proteins](#).

PREPARATION AND STORAGE

- Shipping** The product is shipped with polar packs. Upon receipt, store it immediately at the temperature recommended below.
- Stability & Storage** **Protect from light. Do not freeze.**
- 12 months from date of receipt, 2 to 8 °C as supplied.

BACKGROUND

Stage-Specific Embryonic Antigen-1 (SSEA-1), an antigenic epitope defined as a Lewis x carbohydrate structure, is expressed during early mouse embryogenesis on murine embryonic carcinoma cells (EC), murine embryonic stem cells (ES), and murine human germ cells. Expression of SSEA-1 is down-regulated following differentiation of murine EC and ES cells. In contrast, the differentiation of human EC and ES cells is accompanied by an increase in SSEA-1 expression (1, 2).

References:

1. Solter, D. and Knowles, B.B. (1978) Proc. Natl. Acad. Sci. USA **75**:5565.
2. Fox, N. *et al.* (1983) Cancer Res. **43**:669.

PRODUCT SPECIFIC NOTICES

This product is provided under an agreement between Life Technologies Corporation and R&D Systems, Inc, and the manufacture, use, sale or import of this product is subject to one or more US patents and corresponding non-US equivalents, owned by Life Technologies Corporation and its affiliates. The purchase of this product conveys to the buyer the non-transferable right to use the purchased amount of the product and components of the product only in research conducted by the buyer (whether the buyer is an academic or for-profit entity). The sale of this product is expressly conditioned on the buyer not using the product or its components (1) in manufacturing; (2) to provide a service, information, or data to an unaffiliated third party for payment; (3) for therapeutic, diagnostic or prophylactic purposes; (4) to resell, sell, or otherwise transfer this product or its components to any third party, or for any other commercial purpose. Life Technologies Corporation will not assert a claim against the buyer of the infringement of the above patents based on the manufacture, use or sale of a commercial product developed in research by the buyer in which this product or its components was employed, provided that neither this product nor any of its components was used in the manufacture of such product. For information on purchasing a license to this product for purposes other than research, contact Life Technologies Corporation, Cell Analysis Business Unit, Business Development, 29851 Willow Creek Road, Eugene, OR 97402, Tel: (541) 465-8300. Fax: (541) 335-0354.