

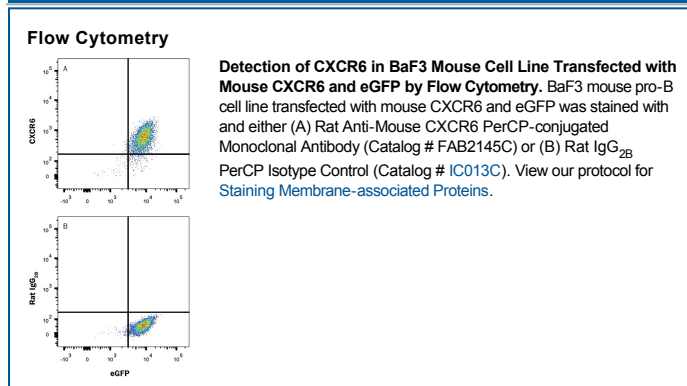
| DESCRIPTION | |
|---------------------------|--|
| Species Reactivity | Mouse |
| Specificity | Stains mouse CXCR6-transfected cells but not irrelevant transfectants. |
| Source | Monoclonal Rat IgG _{2B} Clone # 221002 |
| Purification | Protein A or G purified from hybridoma culture supernatant |
| Immunogen | CHO Chinese hamster ovary cell line transfected with mouse CXCR6 Met1-Leu351 Accession # Q9EQ16 |
| Conjugate | PerCP (Peridinin-chlorophyll Protein Complex) Excitation Wavelength: 482 and 564 nm Emission Wavelength: 675 nm |
| Formulation | Supplied in a saline solution containing BSA and Sodium Azide. See Certificate of Analysis for details. *Contains <0.1% Sodium Azide, which is not hazardous at this concentration according to GHS classifications. Refer to the Safety Data Sheet (SDS) for additional information and handling instructions. |

APPLICATIONS

Please Note: Optimal dilutions should be determined by each laboratory for each application. *General Protocols* are available in the *Technical Information* section on our website.

| | Recommended Concentration | Sample |
|-----------------------|----------------------------------|-----------|
| Flow Cytometry | 10 μ L/10 ⁶ cells | See Below |

DATA



PREPARATION AND STORAGE

| | |
|--------------------------------|--|
| Shipping | The product is shipped with polar packs. Upon receipt, store it immediately at the temperature recommended below. |
| Stability & Storage | Protect from light. Do not freeze. <ul style="list-style-type: none"> 12 months from date of receipt, 2 to 8 °C as supplied. |

BACKGROUND

CXCR6, also known as Bonzo and STRL33, is a G protein coupled chemokine receptor expressed on activated T cells and tumor-infiltrating lymphocytes. It binds soluble CXCL16 and membrane-anchored CXCL16 expressed on dendritic cells and macrophages.