

DESCRIPTION

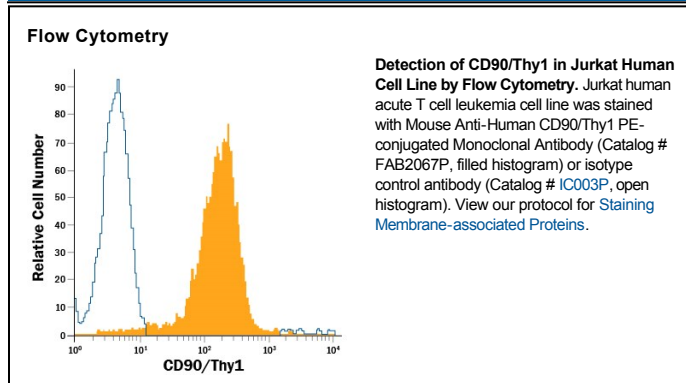
Species Reactivity	Human
Specificity	Detects human CD90/Thy1 in flow cytometry.
Source	Monoclonal Mouse IgG _{2A} Clone # Thy-1A1
Purification	Protein A or G purified from hybridoma culture supernatant
Immunogen	Human CD90/Thy1
Conjugate	Phycoerythrin Excitation Wavelength: 488 nm Emission Wavelength: 565-605 nm
Formulation	Supplied in a saline solution containing BSA and Sodium Azide. See Certificate of Analysis for details. *Contains <0.1% Sodium Azide, which is not hazardous at this concentration according to GHS classifications. Refer to the Safety Data Sheet (SDS) for additional information and handling instructions.

APPLICATIONS

Please Note: Optimal dilutions should be determined by each laboratory for each application. *General Protocols* are available in the *Technical Information* section on our website.

	Recommended Concentration	Sample
Flow Cytometry	10 μ L/10 ⁶ cells	See Below

DATA



PREPARATION AND STORAGE

Shipping	The product is shipped with polar packs. Upon receipt, store it immediately at the temperature recommended below.
Stability & Storage	Protect from light. Do not freeze. <ul style="list-style-type: none"> 12 months from date of receipt, 2 to 8 °C as supplied.

BACKGROUND

CD90, also known as Thy1, is a 25-35 kDa GPI-linked glycoprotein expressed by endothelial cells, hematopoietic stem cells, neurons, fibroblasts, greater alveolar type II progenitors, and mesangial cells. It binds to Integrin α V β 3, and participates in bidirectional signaling, with CD90 itself impacting Src-family kinases. Notably, CD90 has been identified as a cell-surface mediator of cytomegalovirus infection. Mature human CD90 shares 62% amino acid identity with mouse CD90.