

DESCRIPTION

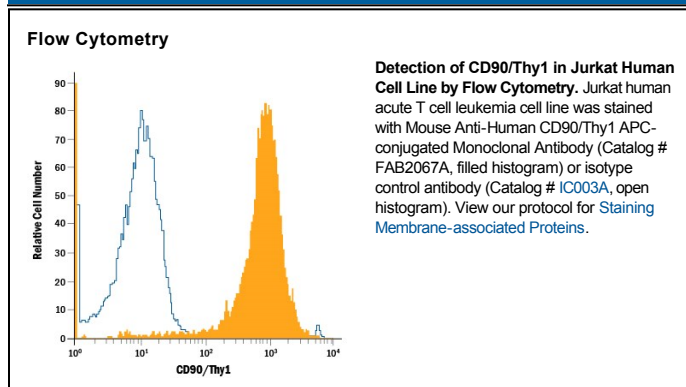
Species Reactivity	Human
Specificity	Detects human CD90/Thy1.
Source	Monoclonal Mouse IgG _{2A} Clone # Thy-1A1
Purification	Protein A or G purified from hybridoma culture supernatant
Immunogen	Human CD90/Thy1 Accession # P04216
Conjugate	Allophycocyanin Excitation Wavelength: 620-650 nm Emission Wavelength: 660-670 nm
Formulation	Supplied in a saline solution containing BSA and Sodium Azide. See Certificate of Analysis for details. *Contains <0.1% Sodium Azide, which is not hazardous at this concentration according to GHS classifications. Refer to the Safety Data Sheet (SDS) for additional information and handling instructions.

APPLICATIONS

Please Note: Optimal dilutions should be determined by each laboratory for each application. *General Protocols* are available in the *Technical Information* section on our website.

	Recommended Concentration	Sample
Flow Cytometry	10 μ L/10 ⁶ cells	See Below

DATA



PREPARATION AND STORAGE

Shipping	The product is shipped with polar packs. Upon receipt, store it immediately at the temperature recommended below.
Stability & Storage	Protect from light. Do not freeze. <ul style="list-style-type: none"> ● 12 months from date of receipt, 2 to 8 °C as supplied.

BACKGROUND

CD90, also known as Thy1, is a GPI-linked glycoprotein expressed by endothelial cells, hematopoietic stem cells, and in developing nervous tissue. Unlike human CD90, mouse CD90 is also highly expressed on T cells and is involved in T cell activation. Over the mature region of CD90, human CD90 shares 63% amino acid identity with mouse CD90/Thy1