

## DESCRIPTION

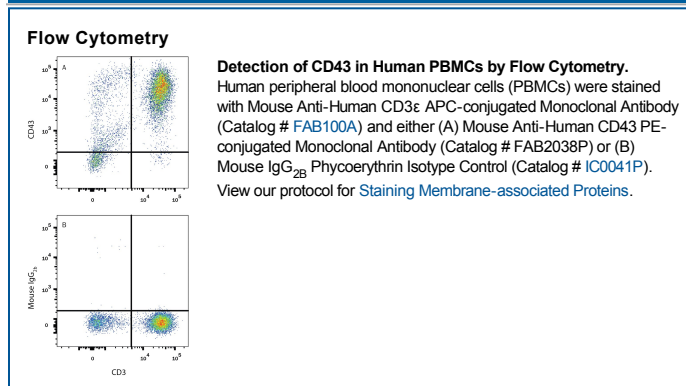
<b>Species Reactivity</b>	Human
<b>Specificity</b>	Detects human CD43. Stains human CD43-transfected cells but not irrelevant transfectants in flow cytometry.
<b>Source</b>	Monoclonal Mouse IgG <sub>2B</sub> Clone # 290111
<b>Purification</b>	Protein A or G purified from hybridoma culture supernatant
<b>Immunogen</b>	NS0 mouse myeloma cell line transfected with human CD43 Ser20-Pro400 Accession # P16150
<b>Conjugate</b>	Phycoerythrin Excitation Wavelength: 488 nm Emission Wavelength: 565-605 nm
<b>Formulation</b>	Supplied in a saline solution containing BSA and Sodium Azide. See Certificate of Analysis for details.  *Contains <0.1% Sodium Azide, which is not hazardous at this concentration according to GHS classifications. Refer to the Safety Data Sheet (SDS) for additional information and handling instructions.

## APPLICATIONS

**Please Note:** Optimal dilutions should be determined by each laboratory for each application. *General Protocols* are available in the *Technical Information* section on our website.

	Recommended Concentration	Sample
<b>Flow Cytometry</b>	10 µL/10 <sup>6</sup> cells	See Below

## DATA



## PREPARATION AND STORAGE

<b>Shipping</b>	The product is shipped with polar packs. Upon receipt, store it immediately at the temperature recommended below.
<b>Stability &amp; Storage</b>	<b>Protect from light. Do not freeze.</b> <ul style="list-style-type: none"> <li>12 months from date of receipt, 2 to 8 °C as supplied.</li> </ul>

## BACKGROUND

CD43, also known as Leukosialin and Sialophorin and Ly-48 in mouse, is a 100-105 kDa type I transmembrane sialylated mucin that is expressed on most leukocytes and some tumor cells. Notably, the membrane expression of CD43 seems to be a characteristic of leukocytes, while cytoplasmic expression without membrane insertion occurs in endothelium and select epithelia. While CD43 restricts leukocyte adhesion and modulates T cell activation, these activities are context specific. CD43 can both induce and protect against apoptosis, and can either promote or block cell adhesion. Mature CD43 shows 49% amino (aa) sequence identity between human and mouse.