

DESCRIPTION

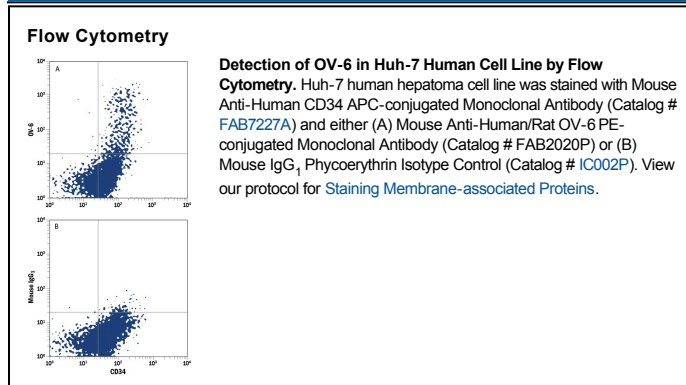
Species Reactivity	Human/Rat
Specificity	Detects human and rat OV-6 antigen.
Source	Monoclonal Mouse IgG ₁ Clone # OV-6
Purification	Protein A or G purified from hybridoma culture supernatant
Immunogen	Carcinogen-treated rat nodular hepatocytes
Conjugate	Phycoerythrin Excitation Wavelength: 488 nm Emission Wavelength: 565-605 nm
Formulation	Supplied in a saline solution containing BSA and Sodium Azide. See Certificate of Analysis for details. *Contains <0.1% Sodium Azide, which is not hazardous at this concentration according to GHS classifications. Refer to the Safety Data Sheet (SDS) for additional information and handling instructions.

APPLICATIONS

Please Note: Optimal dilutions should be determined by each laboratory for each application. *General Protocols* are available in the *Technical Information* section on our website.

	Recommended Concentration	Sample
Flow Cytometry	10 µL/10 ⁶ cells	See Below

DATA



PREPARATION AND STORAGE

Shipping The product is shipped with polar packs. Upon receipt, store it immediately at the temperature recommended below.

Stability & Storage **Protect from light. Do not freeze.**

- 12 months from date of receipt, 2 to 8 °C as supplied.

BACKGROUND

OV-6 antigen has been used as a marker to identify oval cells, putative hepatic stem cells that can differentiate into multiple cell types.

References:

1. Dunsford, H.A. and S. Sell (1989) *Cancer Res.* **49**:4887.
2. Parent, R. *et al.* (2004) *Gastroenterology* **126**:1147.
3. He, Z.P. *et al.* (2003) *Cell Prolif.* **37**:177.
4. Lazaro, C.A. *et al.* (2003) *Hepatology* **38**:1095.
5. He, Z.P. *et al.* (2003) *Differentiation* **71**:281.