

DESCRIPTION

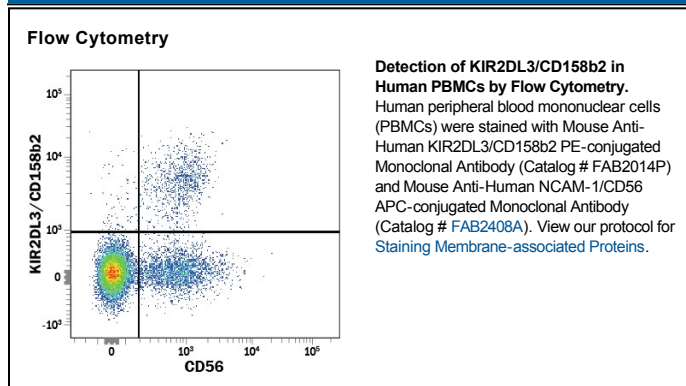
Species Reactivity	Human
Specificity	Detects human KIR2DL3/CD158b2. Stains BaF3 cells transfected with human KIR2DL3 in flow cytometry. Does not stain BaF3 cells transfected with KIR2DL1, 2DL2, 2DL4, 2DL5, 2DS1, 2DS2, 2DS4, 3DL1, 3DL2, or 3DS1.
Source	Monoclonal Mouse IgG _{2A} Clone # 180701
Purification	Protein A or G purified from hybridoma culture supernatant
Immunogen	BaF3 mouse pro-B cell line transfected with human KIR2DL3/CD158b2 Accession # P43628
Conjugate	Phycoerythrin Excitation Wavelength: 488 nm Emission Wavelength: 565-605 nm
Formulation	Supplied in a saline solution containing BSA and Sodium Azide. See Certificate of Analysis for details. *Contains <0.1% Sodium Azide, which is not hazardous at this concentration according to GHS classifications. Refer to the Safety Data Sheet (SDS) for additional information and handling instructions.

APPLICATIONS

Please Note: Optimal dilutions should be determined by each laboratory for each application. *General Protocols* are available in the *Technical Information* section on our website.

	Recommended Concentration	Sample
Flow Cytometry	10 μ L/10 ⁶ cells	See Below

DATA



PREPARATION AND STORAGE

Shipping	The product is shipped with polar packs. Upon receipt, store it immediately at the temperature recommended below.
Stability & Storage	Protect from light. Do not freeze. <ul style="list-style-type: none"> ● 12 months from date of receipt, 2 to 8 °C as supplied.

BACKGROUND

KIR2DL3 is one of several immunoglobulin-like receptors expressed on NK and T cells that bind MHC class I molecules and regulate killer cell activity. KIR2DL3 interacts specifically with HLA-Cw3.