

DESCRIPTION

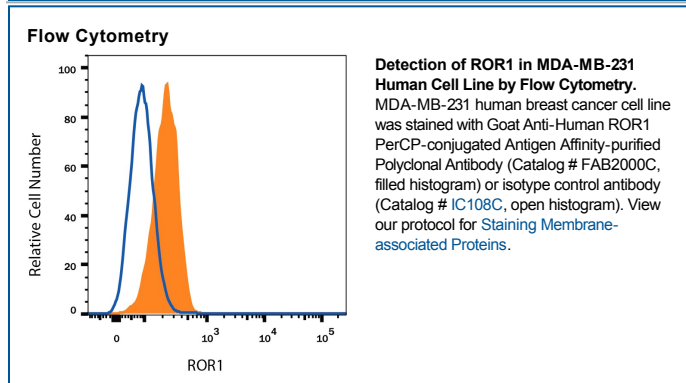
Species Reactivity	Human
Specificity	Detects human ROR1 in direct ELISAs and Western blots. In direct ELISAs, less than 5% cross-reactivity with recombinant human ROR2 is observed.
Source	Polyclonal Goat IgG
Purification	Antigen Affinity-purified
Immunogen	Mouse myeloma cell line NS0-derived recombinant human ROR1 Ala24-Glu403 Accession # Q01973
Conjugate	PerCP (Peridinin-chlorophyll Protein Complex) Excitation Wavelength: 482 and 564 nm Emission Wavelength: 675 nm
Formulation	Supplied in a saline solution containing BSA and Sodium Azide. See Certificate of Analysis for details. *Contains <0.1% Sodium Azide, which is not hazardous at this concentration according to GHS classifications. Refer to the Safety Data Sheet (SDS) for additional information and handling instructions.

APPLICATIONS

Please Note: Optimal dilutions should be determined by each laboratory for each application. *General Protocols* are available in the *Technical Information* section on our website.

	Recommended Concentration	Sample
Flow Cytometry	10 μ L/ 10^6 cells	See Below

DATA



PREPARATION AND STORAGE

Shipping The product is shipped with polar packs. Upon receipt, store it immediately at the temperature recommended below.

Stability & Storage **Protect from light. Do not freeze.**

- 12 months from date of receipt, 2 to 8 °C as supplied.

BACKGROUND

ROR1 belongs to the ROR family of receptor tyrosine kinases, which are characterized by: the extracellular immunoglobulin domain, cysteine-rich domain that resembles the Wnt-binding sites of Frizzled proteins, kringle domain and intracellular kinase domain. Human ROR1 shares 97% and 58% amino acid sequence identity with mouse ROR1 and human ROR2, respectively.