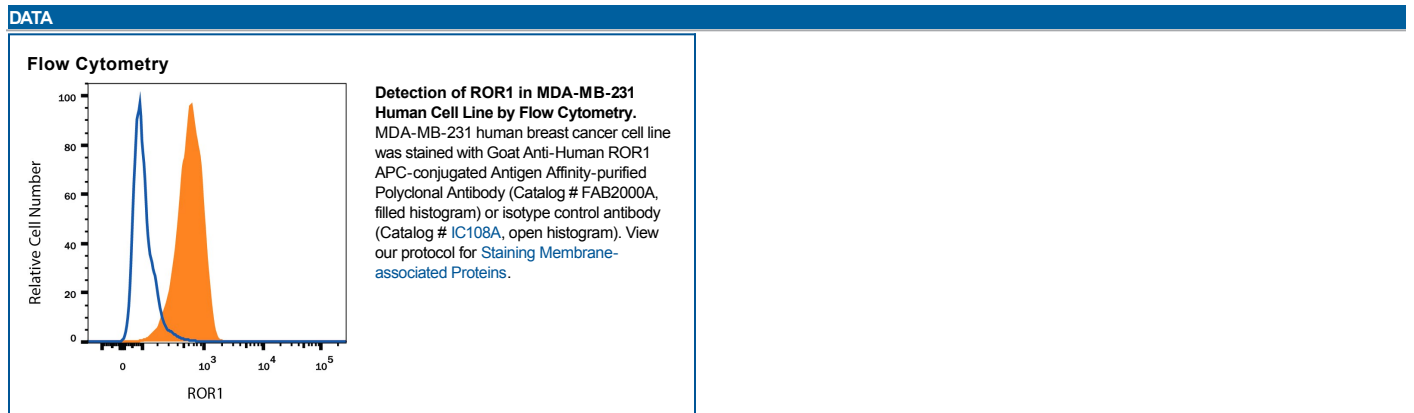


DESCRIPTION	
Species Reactivity	Human
Specificity	Detects human ROR1 in direct ELISAs and Western blots. In direct ELISAs, less than 5% cross-reactivity with recombinant human ROR2 is observed.
Source	Polyclonal Goat IgG
Purification	Antigen Affinity-purified
Immunogen	Mouse myeloma cell line NS0-derived recombinant human ROR1 Ala24-Glu403 Accession # Q01973
Conjugate	Allophycocyanin Excitation Wavelength: 620-650 nm Emission Wavelength: 660-670 nm
Formulation	Supplied in a saline solution containing BSA and Sodium Azide. See Certificate of Analysis for details. *Contains <0.1% Sodium Azide, which is not hazardous at this concentration according to GHS classifications. Refer to the Safety Data Sheet (SDS) for additional information and handling instructions.

APPLICATIONS		
Please Note: Optimal dilutions should be determined by each laboratory for each application. <i>General Protocols</i> are available in the <i>Technical Information</i> section on our website.		
	Recommended Concentration	Sample
Flow Cytometry	10 μ L/10 ⁶ cells	See Below



PREPARATION AND STORAGE	
Shipping	The product is shipped with polar packs. Upon receipt, store it immediately at the temperature recommended below.
Stability & Storage	Protect from light. Do not freeze. <ul style="list-style-type: none"> ● 12 months from date of receipt, 2 to 8 °C as supplied.

BACKGROUND

ROR1 belongs to the ROR family of receptor tyrosine kinases, which are characterized by: the extracellular immunoglobulin domain, cysteine-rich domain that resembles the Wnt-binding sites of Frizzled proteins, kringle domain and intracellular kinase domain. Human ROR1 shares 97% and 58% amino acid sequence identity with mouse ROR1 and human ROR2, respectively.