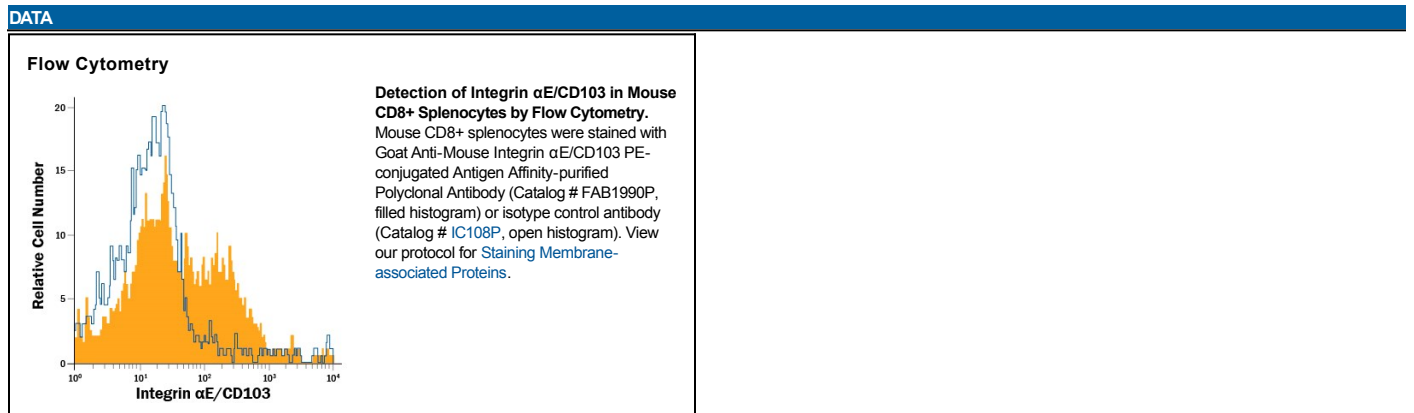


DESCRIPTION	
<b>Species Reactivity</b>	Mouse
<b>Specificity</b>	Detects mouse Integrin $\alpha$ E/CD103 in direct ELISAs and Western blots. In direct ELISAs and Western blots, less than 1% cross-reactivity with recombinant mouse (rm) Integrin $\alpha$ 2, rmIntegrin $\alpha$ 3, rmIntegrin $\alpha$ 4, recombinant human (rh) Integrin $\alpha$ M, and rhIntegrin $\alpha$ V is observed.
<b>Source</b>	Polyclonal Goat IgG
<b>Purification</b>	Antigen Affinity-purified
<b>Immunogen</b>	Mouse myeloma cell line NS0-derived recombinant mouse Integrin $\alpha$ E/CD103 Phe20-Arg1113 (Ser453Gly) Accession # ABD49099
<b>Conjugate</b>	Phycoerythrin Excitation Wavelength: 488 nm Emission Wavelength: 565-605 nm
<b>Formulation</b>	Supplied in a saline solution containing BSA and Sodium Azide. See Certificate of Analysis for details.  *Contains <0.1% Sodium Azide, which is not hazardous at this concentration according to GHS classifications. Refer to the Safety Data Sheet (SDS) for additional information and handling instructions.

APPLICATIONS		
<b>Please Note:</b> Optimal dilutions should be determined by each laboratory for each application. <i>General Protocols</i> are available in the <i>Technical Information</i> section on our website.		
	<b>Recommended Concentration</b>	<b>Sample</b>
<b>Flow Cytometry</b>	10 $\mu$ L/10 <sup>6</sup> cells	See Below



PREPARATION AND STORAGE	
<b>Shipping</b>	The product is shipped with polar packs. Upon receipt, store it immediately at the temperature recommended below.
<b>Stability &amp; Storage</b>	<b>Protect from light. Do not freeze.</b> <ul style="list-style-type: none"> <li>● 12 months from date of receipt, 2 to 8 °C as supplied.</li> </ul>

**BACKGROUND**

The  $\alpha$ E subunit, also known as CD103, forms a non-covalent heterodimer with Integrin  $\beta$ 7. Integrin  $\alpha$ E/ $\beta$ 7 is a receptor for E-Cadherin. Integrin  $\alpha$ E is expressed in intra-epithelial lymphocytes and mediates adhesion of intra-epithelial lymphocytes to epithelial cell monolayers.