

DESCRIPTION

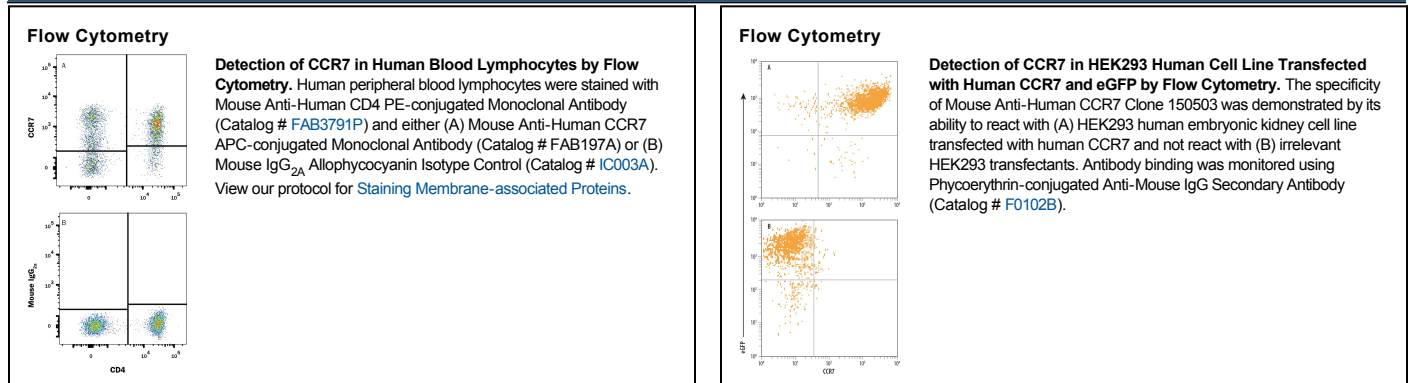
Species Reactivity	Human
Specificity	Detects human CCR7.
Source	Monoclonal Mouse IgG _{2A} Clone # 150503
Purification	Protein A or G purified from hybridoma culture supernatant
Immunogen	Human CCR7 transfectants Met1-Pro378 Accession # AAA58615
Conjugate	Allophycocyanin Excitation Wavelength: 620-650 nm Emission Wavelength: 660-670 nm
Formulation	Supplied in a saline solution containing BSA and Sodium Azide. See Certificate of Analysis for details. *Contains <0.1% Sodium Azide, which is not hazardous at this concentration according to GHS classifications. Refer to the Safety Data Sheet (SDS) for additional information and handling instructions.

APPLICATIONS

Please Note: Optimal dilutions should be determined by each laboratory for each application. *General Protocols* are available in the *Technical Information* section on our website.

	Recommended Concentration	Sample
Flow Cytometry	10 μ L/10 ⁶ cells	See Below

DATA



PREPARATION AND STORAGE

Shipping The product is shipped with polar packs. Upon receipt, store it immediately at the temperature recommended below.

Stability & Storage **Protect from light. Do not freeze.**

- 12 months from date of receipt, 2 to 8 °C as supplied.

BACKGROUND

CCR7 is a 7 transmembrane G protein coupled chemokine receptor. CCR7 is expressed on T cells and mature dendritic cells and transduces chemotactic signals in response to CCL19 and CCL21. Human CCR7 shares 87% amino acid sequence identity with mouse CCR7.