

## DESCRIPTION

<b>Species Reactivity</b>	Human
<b>Specificity</b>	Detects human CCR6. Stains human CCR6 transfectants but not the parental cell line in flow cytometry. Does not cross-react with transfectants expressing human CCR1, CCR2, CCR3, CCR4, CCR5, CCR7, CXCR1, CXCR2, CXCR3, CXCR4, or STRL33.
<b>Source</b>	Monoclonal Mouse IgG <sub>2B</sub> Clone # 53103
<b>Purification</b>	Protein A or G purified from ascites
<b>Immunogen</b>	NS0 mouse myeloma cell line transfected with human CCR6 Met1-Met374 Accession # P51684
<b>Conjugate</b>	Phycoerythrin Excitation Wavelength: 488 nm Emission Wavelength: 565-605 nm
<b>Formulation</b>	Supplied in a saline solution containing BSA and Sodium Azide. See Certificate of Analysis for details.  *Contains <0.1% Sodium Azide, which is not hazardous at this concentration according to GHS classifications. Refer to the Safety Data Sheet (SDS) for additional information and handling instructions.

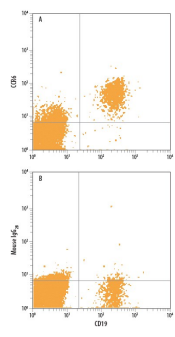
## APPLICATIONS

**Please Note:** Optimal dilutions should be determined by each laboratory for each application. *General Protocols* are available in the *Technical Information* section on our website.

	Recommended Concentration	Sample
<b>Flow Cytometry</b>	10 $\mu$ L/10 <sup>6</sup> cells	See Below

## DATA

### Flow Cytometry



**Detection of CCR6 in Human PBMCs by Flow Cytometry.**  
Human peripheral blood mononuclear cells (PBMCs) were stained with Mouse Anti-Human CD19 APC-conjugated Monoclonal Antibody (Catalog # [FAB4867A](#)) and either (A) Mouse Anti-Human CCR6 PE-conjugated Monoclonal Antibody (Catalog # [FAB195P](#)) or (B) Mouse IgG<sub>2B</sub> Phycoerythrin Isotype Control (Catalog # [IC0041P](#)). View our protocol for [Staining Membrane-associated Proteins](#).

## PREPARATION AND STORAGE

<b>Shipping</b>	The product is shipped with polar packs. Upon receipt, store it immediately at the temperature recommended below.
<b>Stability &amp; Storage</b>	<b>Protect from light. Do not freeze.</b> <ul style="list-style-type: none"> <li>12 months from date of receipt, 2 to 8 °C as supplied.</li> </ul>

## BACKGROUND

CCR6 is a seven transmembrane-spanning G protein-coupled receptor that binds the chemokine MIP-3 $\alpha$  and mediates the chemoattraction of B and T lymphocytes.