

DESCRIPTION

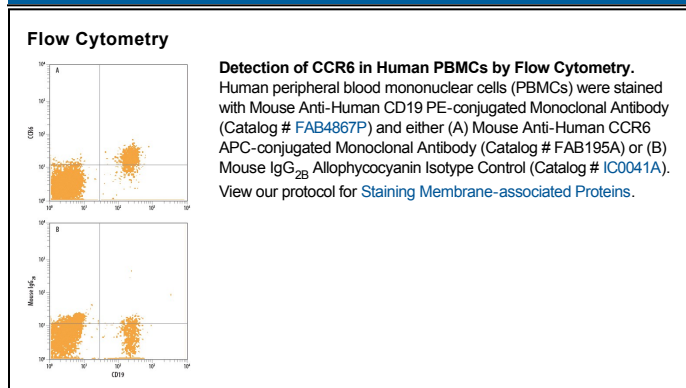
| | |
|---------------------------|------------------------------------------------------------------------------------------------------------------------------------------------------------------------------------------------------------------------------------------------------------------------------------------------------------------------|
| Species Reactivity | Human |
| Specificity | Detects human CCR6. Stains human CCR6 transfectants but not the parental cell line in flow cytometry. Does not cross-react with transfectants expressing human CCR1, CCR2, CCR3, CCR4, CCR5, CCR7, CXCR1, CXCR2, CXCR3, CXCR4, or STRL33. |
| Source | Monoclonal Mouse IgG _{2B} Clone # 53103 |
| Purification | Protein A or G purified from ascites |
| Immunogen | NS0 mouse myeloma cell line transfected with human CCR6 Met1-Met374 Accession # P51684 |
| Conjugate | Allophycocyanin Excitation Wavelength: 620-650 nm Emission Wavelength: 660-670 nm |
| Formulation | Supplied in a saline solution containing BSA and Sodium Azide. See Certificate of Analysis for details. *Contains <0.1% Sodium Azide, which is not hazardous at this concentration according to GHS classifications. Refer to the Safety Data Sheet (SDS) for additional information and handling instructions. |

APPLICATIONS

Please Note: Optimal dilutions should be determined by each laboratory for each application. *General Protocols* are available in the *Technical Information* section on our website.

| | Recommended Concentration | Sample |
|-----------------------|-----------------------------|-----------|
| Flow Cytometry | 10 µL/10 ⁶ cells | See Below |

DATA



PREPARATION AND STORAGE

| | |
|--------------------------------|-------------------------------------------------------------------------------------------------------------------|
| Shipping | The product is shipped with polar packs. Upon receipt, store it immediately at the temperature recommended below. |
| Stability & Storage | Protect from light. Do not freeze. ● 12 months from date of receipt, 2 to 8 °C as supplied. |

BACKGROUND

CCR6 is a seven transmembrane-spanning G protein-coupled receptor that binds the chemokine MIP-3α and mediates the chemoattraction of B and T lymphocytes.