

## DESCRIPTION

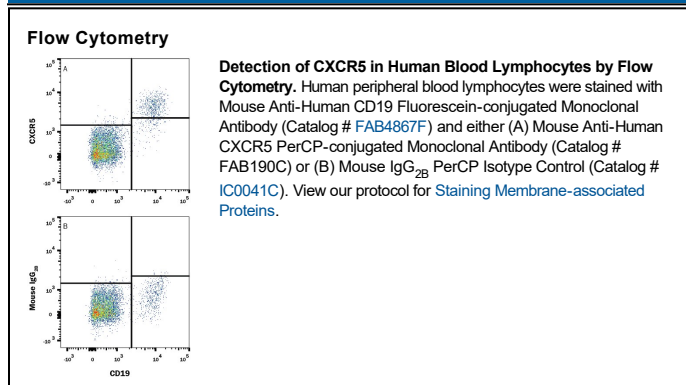
<b>Species Reactivity</b>	Human
<b>Specificity</b>	Stains human CXCR5 transfectants but not the parental cell lines in flow cytometry. Does not cross-react with human CXCR2, CXCR3, or CXCR4 transfectants.
<b>Source</b>	Monoclonal Mouse IgG <sub>2B</sub> Clone # 51505
<b>Purification</b>	Protein A or G purified from hybridoma culture supernatant
<b>Immunogen</b>	NS0 mouse myeloma cell line transfected with human CXCR5 Met1-Phe372 Accession # P32302
<b>Conjugate</b>	PerCP (Peridinin-chlorophyll Protein Complex) Excitation Wavelength: 482 and 564 nm Emission Wavelength: 675 nm
<b>Formulation</b>	Supplied in a saline solution containing BSA and Sodium Azide. See Certificate of Analysis for details.  *Contains <0.1% Sodium Azide, which is not hazardous at this concentration according to GHS classifications. Refer to the Safety Data Sheet (SDS) for additional information and handling instructions.

## APPLICATIONS

**Please Note:** Optimal dilutions should be determined by each laboratory for each application. *General Protocols* are available in the *Technical Information* section on our website.

	<b>Recommended Concentration</b>	<b>Sample</b>
<b>Flow Cytometry</b>	10 $\mu$ L/10 <sup>6</sup> cells	See Below

## DATA



## PREPARATION AND STORAGE

**Shipping** The product is shipped with polar packs. Upon receipt, store it immediately at the temperature recommended below.

**Stability & Storage** **Protect from light. Do not freeze.**

- 12 months from date of receipt, 2 to 8 °C as supplied.

## BACKGROUND

CXCR5, also known as BLR-1, is a 7 transmembrane domain protein expressed on B cells. CXCR5 mediates B cell migration following binding of CXCL13.