

DESCRIPTION

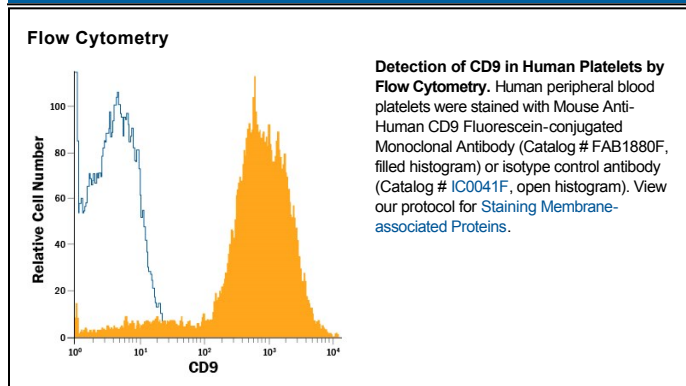
Species Reactivity	Human
Specificity	Detects human CD9. Stains human CD9 transfectants, but not irrelevant transfectants in flow cytometry.
Source	Monoclonal Mouse IgG _{2B} Clone # 209306
Purification	Protein A or G purified from hybridoma culture supernatant
Immunogen	NS0 mouse myeloma cell line transfected with human CD9 Met1-Val228 Accession # P21926
Conjugate	Fluorescein Excitation Wavelength: 488 nm Emission Wavelength: 515-545 nm (FITC)
Formulation	Supplied in a saline solution containing BSA and Sodium Azide. See Certificate of Analysis for details. *Contains <0.1% Sodium Azide, which is not hazardous at this concentration according to GHS classifications. Refer to the Safety Data Sheet (SDS) for additional information and handling instructions.

APPLICATIONS

Please Note: Optimal dilutions should be determined by each laboratory for each application. *General Protocols* are available in the *Technical Information* section on our website.

	Recommended Concentration	Sample
Flow Cytometry	10 μ L/10 ⁶ cells	See Below

DATA



PREPARATION AND STORAGE

Shipping	The product is shipped with polar packs. Upon receipt, store it immediately at the temperature recommended below.
Stability & Storage	Protect from light. Do not freeze. <ul style="list-style-type: none"> 12 months from date of receipt, 2 to 8 °C as supplied.

BACKGROUND

CD9, also known as motility-related protein-1 (MRP-1), is a tetraspan family glycoprotein expressed by a variety of hematopoietic and epithelial cells. It forms homotypic associations as well as heterotypic associations with other tetraspan proteins, some integrins and MHC class II proteins. CD9 has been shown to modulate cellular adhesion, migration and proliferation.