

DESCRIPTION

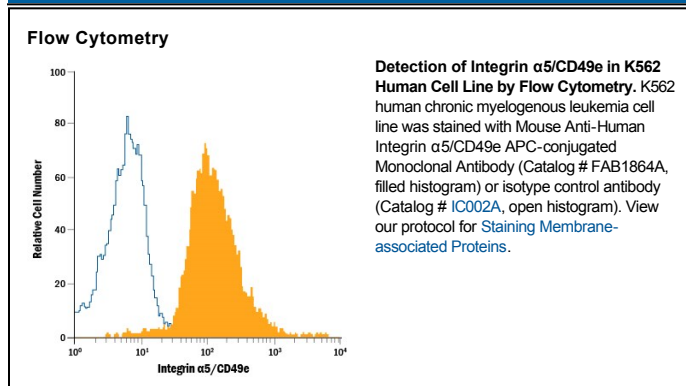
Species Reactivity	Human
Specificity	Detects human Integrin $\alpha 5$ /CD49e.
Source	Monoclonal Mouse IgG ₁ Clone # 238307
Purification	Protein A or G purified from hybridoma culture supernatant
Immunogen	Mouse myeloma cell line NS0-derived recombinant human Integrin $\alpha 5$ /CD49e Phe42-Tyr995 Accession # P08648
Conjugate	Allophycocyanin Excitation Wavelength: 620-650 nm Emission Wavelength: 660-670 nm
Formulation	Supplied in a saline solution containing BSA and Sodium Azide. See Certificate of Analysis for details. *Contains <0.1% Sodium Azide, which is not hazardous at this concentration according to GHS classifications. Refer to the Safety Data Sheet (SDS) for additional information and handling instructions.

APPLICATIONS

Please Note: Optimal dilutions should be determined by each laboratory for each application. *General Protocols* are available in the *Technical Information* section on our website.

	Recommended Concentration	Sample
Flow Cytometry	10 μ L/10 ⁶ cells	See Below

DATA



PREPARATION AND STORAGE

Shipping	The product is shipped with polar packs. Upon receipt, store it immediately at the temperature recommended below.
Stability & Storage	Protect from light. Do not freeze. <ul style="list-style-type: none"> 12 months from date of receipt, 2 to 8 °C as supplied.

BACKGROUND

The Integrin $\alpha 5$ subunit, also known as CD49e, associates with the Integrin $\beta 1$ subunit (CD29) to form the VLA-5 complex. It functions as a receptor for fibronectin and is expressed on fibroblasts, endothelial cells, epithelial cells, platelets and some melanoma cell lines (1, 2).

References:

1. Springer, T.A. *et al.* (1982) *Immunol. Rev.* **68**:171.
2. Te Velde, A. *et al.* (1988) *J. Immunol.* **140**:1548.