

DESCRIPTION

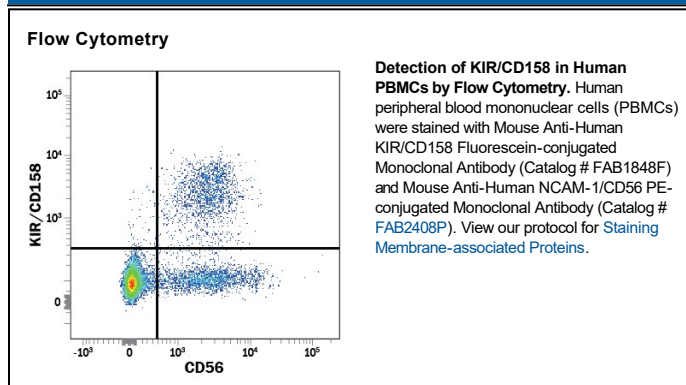
Species Reactivity	Human
Specificity	Detects human KIR/CD158. Stains cells transfected with KIR2DL2, 2DL3, 2DS2, or 2DS4. It does not stain cells transfected with KIR2DL1, 2DL4, 3DL1, or 3DL2.
Source	Monoclonal Mouse IgG _{2B} Clone # 180704
Purification	Protein A or G purified from hybridoma culture supernatant
Immunogen	BaF3 mouse pro-B cell line transfected with human KIR2DL3
Conjugate	Fluorescein Excitation Wavelength: 488 nm Emission Wavelength: 515-545 nm (FITC)
Formulation	Supplied in a saline solution containing BSA and Sodium Azide. See Certificate of Analysis for details. *Contains <0.1% Sodium Azide, which is not hazardous at this concentration according to GHS classifications. Refer to the Safety Data Sheet (SDS) for additional information and handling instructions.

APPLICATIONS

Please Note: Optimal dilutions should be determined by each laboratory for each application. [General Protocols](#) are available in the [Technical Information](#) section on our website.

	Recommended Concentration	Sample
Flow Cytometry	10 μ L/10 ⁶ cells	See Below

DATA



PREPARATION AND STORAGE

Shipping	The product is shipped with polar packs. Upon receipt, store it immediately at the temperature recommended below.
Stability & Storage	Protect from light. Do not freeze. <ul style="list-style-type: none"> ● 12 months from date of receipt, 2 to 8 °C as supplied.

BACKGROUND

KIR is a family of immunoglobulin-like receptors expressed on NK cells and some T cells. Family members with long (L) cytoplasmic tails deliver inhibitory signals and those with short (S) cytoplasmic tails deliver activating signals. Several KIR proteins are known to recognize particular alleles of MHC class I proteins.