

DESCRIPTION

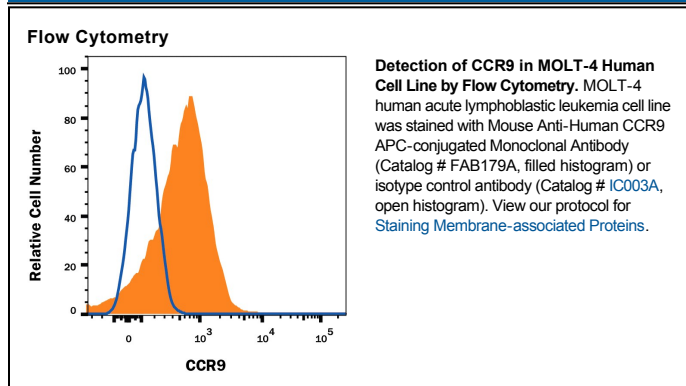
Species Reactivity	Human
Specificity	Specifically stains human CCR9 transfectants and MOLT-4 cells. It does not react with the parental BaF3 cells or human CCR7-transfected BaF3 cells.
Source	Monoclonal Mouse IgG _{2A} Clone # 112509
Purification	Protein A or G purified from hybridoma culture supernatant
Immunogen	BaF3 mouse pro-B cell line transfected with human CCR9 Met1-Leu369 Accession # P51686
Conjugate	Allophycocyanin Excitation Wavelength: 620-650 nm Emission Wavelength: 660-670 nm
Formulation	Supplied in a saline solution containing BSA and Sodium Azide. See Certificate of Analysis for details. *Contains <0.1% Sodium Azide, which is not hazardous at this concentration according to GHS classifications. Refer to the Safety Data Sheet (SDS) for additional information and handling instructions.

APPLICATIONS

Please Note: Optimal dilutions should be determined by each laboratory for each application. *General Protocols* are available in the *Technical Information* section on our website.

	Recommended Concentration	Sample
Flow Cytometry	10 μ L/10 ⁶ cells	See Below

DATA



PREPARATION AND STORAGE

Shipping	The product is shipped with polar packs. Upon receipt, store it immediately at the temperature recommended below.
Stability & Storage	Protect from light. Do not freeze. <ul style="list-style-type: none"> 12 months from date of receipt, 2 to 8 °C as supplied.

BACKGROUND

CCR9 is a G protein-linked seven transmembrane domain cytokine receptor. CCR9 serves as a receptor for CCL25/TECK. It is expressed on mature and immature thymocytes and some peripheral T and B cells.