

DESCRIPTION

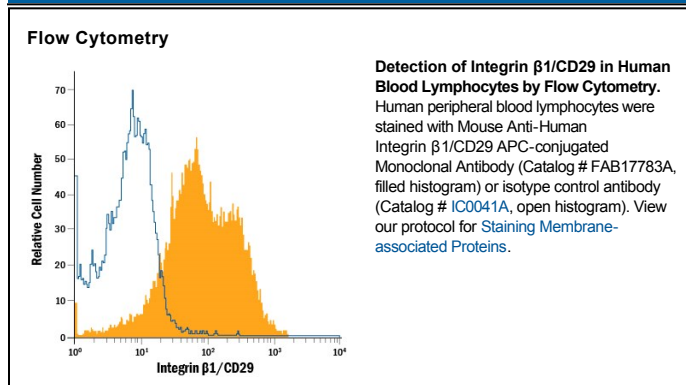
Species Reactivity	Human
Specificity	Detects human Integrin β 1/CD29 in direct ELISAs and Western blots. In Western blots, no cross-reactivity with recombinant human Integrin β 3, β 4, β 5, β 8, recombinant mouse Integrin β 1, β 2, β 6, or β 7 is observed.
Source	Monoclonal Mouse IgG _{2B} Clone # 419127
Purification	Protein A or G purified from hybridoma culture supernatant
Immunogen	Chinese hamster ovary cell line CHO-derived recombinant human Integrin β 1/CD29 Gln21-Asp728 (predicted) Accession # P05556
Conjugate	Allophycocyanin Excitation Wavelength: 620-650 nm Emission Wavelength: 660-670 nm
Formulation	Supplied in a saline solution containing BSA and Sodium Azide. See Certificate of Analysis for details. *Contains <0.1% Sodium Azide, which is not hazardous at this concentration according to GHS classifications. Refer to the Safety Data Sheet (SDS) for additional information and handling instructions.

APPLICATIONS

Please Note: Optimal dilutions should be determined by each laboratory for each application. *General Protocols* are available in the *Technical Information* section on our website.

	Recommended Concentration	Sample
Flow Cytometry	10 μ L/10 ⁶ cells	See Below

DATA



PREPARATION AND STORAGE

Shipping	The product is shipped with polar packs. Upon receipt, store it immediately at the temperature recommended below.
Stability & Storage	Protect from light. Do not freeze. <ul style="list-style-type: none"> 12 months from date of receipt, 2 to 8 °C as supplied.

BACKGROUND

The Integrin β 1 subunit, also known as VLA- β chain and CD29, associates with at least ten different Integrin α subunits.