

## DESCRIPTION

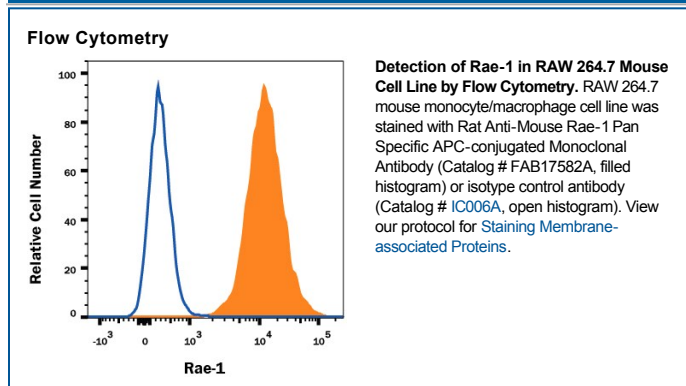
<b>Species Reactivity</b>	Mouse
<b>Specificity</b>	Detects mouse Rae-1. It recognizes Rae-1 $\alpha$ , $\beta$ , $\delta$ , $\gamma$ and $\epsilon$ .
<b>Source</b>	Monoclonal Rat IgG <sub>2A</sub> Clone # 186107
<b>Purification</b>	Protein A or G purified from hybridoma culture supernatant
<b>Immunogen</b>	Mouse myeloma cell line NS0-derived recombinant mouse Rae-1 $\delta$ Leu29-Ser227 Accession # Q9JI58
<b>Conjugate</b>	Allophycocyanin Excitation Wavelength: 620-650 nm Emission Wavelength: 660-670 nm
<b>Formulation</b>	Supplied in a saline solution containing BSA and Sodium Azide. See Certificate of Analysis for details.  *Contains <0.1% Sodium Azide, which is not hazardous at this concentration according to GHS classifications. Refer to the Safety Data Sheet (SDS) for additional information and handling instructions.

## APPLICATIONS

**Please Note:** Optimal dilutions should be determined by each laboratory for each application. [General Protocols](#) are available in the [Technical Information](#) section on our website.

	Recommended Concentration	Sample
<b>Flow Cytometry</b>	10 $\mu$ L/10 <sup>6</sup> cells	See Below

## DATA



## PREPARATION AND STORAGE

<b>Shipping</b>	The product is shipped with polar packs. Upon receipt, store it immediately at the temperature recommended below.
<b>Stability &amp; Storage</b>	<b>Protect from light. Do not freeze.</b> <ul style="list-style-type: none"> <li>12 months from date of receipt, 2 to 8 °C as supplied.</li> </ul>

## BACKGROUND

Rae-1 $\alpha$ ,  $\beta$ ,  $\gamma$ ,  $\delta$  and  $\epsilon$  comprise a family of closely related (88-95% amino acid identity) GPI-linked cell surface proteins that function as ligands for mouse NKG2D, an activating receptor expressed on NK and T cells. Rae-1 transcripts are expressed in mouse embryos and several tumor cell lines but are absent from most normal adult tissues. Rae-1 protein expression on tumor cell lines has been implicated in *in vivo* tumor rejection.