

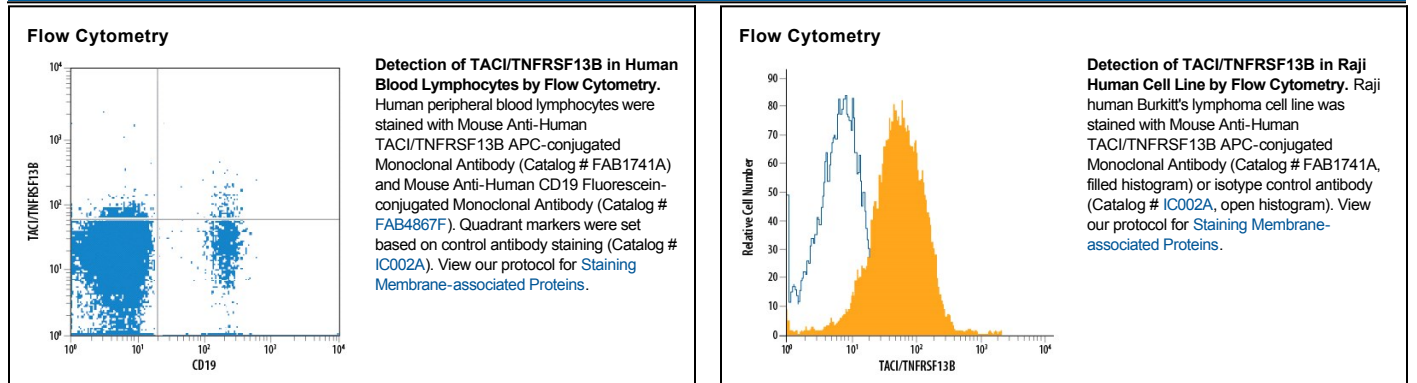
DESCRIPTION	
<b>Species Reactivity</b>	Human
<b>Specificity</b>	Detects human TACI/TNFRSF13B in direct ELISAs. In direct ELISAs, no cross-reactivity with recombinant human BCMA or recombinant mouse TACI is observed.
<b>Source</b>	Monoclonal Mouse IgG <sub>1</sub> Clone # 165604
<b>Purification</b>	Protein A or G purified from hybridoma culture supernatant
<b>Immunogen</b>	Mouse myeloma cell line NS0-derived recombinant human TACI/TNFRSF13B Ser2-Thr166 Accession # O14836
<b>Conjugate</b>	Allophycocyanin Excitation Wavelength: 620-650 nm Emission Wavelength: 660-670 nm
<b>Formulation</b>	Supplied in a saline solution containing BSA and Sodium Azide. See Certificate of Analysis for details.  *Contains <0.1% Sodium Azide, which is not hazardous at this concentration according to GHS classifications. Refer to the Safety Data Sheet (SDS) for additional information and handling instructions.

## APPLICATIONS

**Please Note:** Optimal dilutions should be determined by each laboratory for each application. *General Protocols* are available in the *Technical Information* section on our website.

	Recommended Concentration	Sample
<b>Flow Cytometry</b>	10 $\mu$ L/10 <sup>6</sup> cells	See Below

## DATA



## PREPARATION AND STORAGE

<b>Shipping</b>	The product is shipped with polar packs. Upon receipt, store it immediately at the temperature recommended below.
<b>Stability &amp; Storage</b>	<b>Protect from light. Do not freeze.</b> <ul style="list-style-type: none"> <li>● 12 months from date of receipt, 2 to 8 °C as supplied.</li> </ul>

## BACKGROUND

TACI, transmembrane activator and CAML-interactor, is a member of the TNF receptor superfamily. TACI is a type III membrane protein with an extracellular N-terminus in the absence of a cleaved signal sequence. The extracellular region of TACI contains two cysteine rich domains. Within the TNFRSF, it shares the highest homology with BCMA. TACI and BCMA have both been shown to bind APRIL and BAFF, members of the TNF ligand superfamily. TACI is expressed on the cell surface of B cells and activated, but not resting, T cells. Analogous to BCMA, data suggests that TACI may play an important role in B cell development, function and regulation. Human TACI is a 293 amino acid (aa) protein consisting of a 166 aa extracellular domain, a 20 aa transmembrane domain, and a 107 aa intracellular domain. Human and mouse TACI share 54% amino acid identity.

### References:

1. Xia, X.-Z. *et al.* (2000) *J. Exp. Med.* **192**:137.
2. von Bulow, G.U. *et al.* (1997) *Science*, **278**:138.
3. Gross, J.A. *et al.* (2000) *Nature* **404**:995.
4. Marsters, S.A. *et al.* (2000) *Curr. Biol.* **10**:785.
5. Yan, M. *et al.* (2000) *Nature Immunol.* **1**:37.
6. Wu, Y. *et al.* (2000) *J. Biol. Chem.* **275**:35478.