

Human Integrin $\beta 2$ /CD18 Fluorescein-conjugated Antibody

Monoclonal Mouse IgG₁ Clone # 212701

Catalog Number: FAB1730F
100 Tests

DESCRIPTION

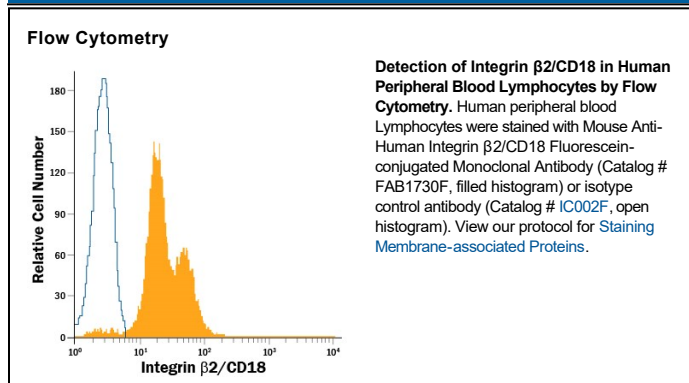
Species Reactivity	Human
Specificity	Detects human Integrin $\beta 2$ /CD18 in direct ELISAs and Western blots. In direct ELISAs, no cross-reactivity with recombinant human Integrin $\beta 1$ or recombinant mouse Integrin $\alpha 5$ is observed.
Source	Monoclonal Mouse IgG ₁ Clone # 212701
Purification	Protein A or G purified from hybridoma culture supernatant
Immunogen	Mouse myeloma cell line NS0-derived recombinant human Integrin $\beta 2$ /CD18 Gln23-Asn700 Accession # AAA59490
Conjugate	Fluorescein Excitation Wavelength: 488 nm Emission Wavelength: 515-545 nm (FITC)
Formulation	Supplied in a saline solution containing BSA and Sodium Azide. See Certificate of Analysis for details. *Contains <0.1% Sodium Azide, which is not hazardous at this concentration according to GHS classifications. Refer to the Safety Data Sheet (SDS) for additional information and handling instructions.

APPLICATIONS

Please Note: Optimal dilutions should be determined by each laboratory for each application. [General Protocols](#) are available in the Technical Information section on our website.

	Recommended Concentration	Sample
Flow Cytometry	10 μ L/10 ⁶ cells	See Below

DATA



PREPARATION AND STORAGE

Shipping	The product is shipped with polar packs. Upon receipt, store it immediately at the temperature recommended below.
Stability & Storage	Protect from light. Do not freeze. ● 12 months from date of receipt, 2 to 8 °C as supplied.

BACKGROUND

Integrin $\alpha\beta 2$, also called CD11c/CD18, p150/95 or complement receptor type 4 (CR4), is one of four $\beta 2$ integrins. The non-covalent heterodimer of 150 kDa αX /CD11c and 95 kDa $\beta 2$ /CD18 integrin subunits is expressed on macrophages, dendritic cells and hairy cell leukemias, with lower amounts on other myeloid cells and activated B, NK and some cytotoxic T cells (1-7). Like other integrins, $\alpha\beta 2$ has multiple activation states (3). In the presence of divalent cations and "inside-out" signaling, $\alpha\beta 2$ is fully active and extended. The αX vWFA or I-domain, which contains the adhesion sites, forms the N-terminal head region with the αX beta-propeller and the $\beta 2$ vWFA domain (1, 8). In the inactive state, the heterodimer flexes in the center at the αX thigh and calf domains and $\beta 2$ I-EGF domains, impeding access to adhesion sites (1). The 1088 aa human αX /CD11c ECD shares 70-76% aa sequence identity with mouse, rat and canine αX while the 678 aa human $\beta 2$ /CD18 ECD shares 81-83% aa sequence identity with mouse, rat, cow, dog, goat, sheep, and pig $\beta 2$. Potential αX isoforms containing 719 and 725 aa (as compared to full-length 1163 aa αX) lack the vWFA domain and the N-terminus. Active $\alpha\beta 2$ shares some adhesion partners with $\alpha\text{M}\beta 2$ /CD11b/CD18, including complement opsonin fragment iC3b, ICAMs, vWF and fibrinogen, and is expressed on many of the same cells (4-11). However, $\alpha\text{M}\beta 2$ activity is often constitutive, while $\alpha\beta 2$ activity requires cell activation (4-7). $\alpha\beta 2$ also binds osteopontin, Thy-1, plasminogen, heparin, and proteins with abnormally exposed acidic residues (11-16). The adhesion events are important for proliferation, degranulation, chemotactic migration, and phagocytosis of complement-opsonized particles (5, 6, 9, 11, 12, 16). Mutations of $\beta 2$, especially in the vWFA domain, cause leukocyte adhesion deficiency (LAD-1) and susceptibility to bacterial infections (17).

References:

1. Corbi, A.L. *et al.* (1987) EMBO J. **6**:4023.
2. Kishimoto, T.K. *et al.* (1987) Cell **48**:681.
3. Hynes, R.O. (2002) Cell **110**:673.
4. Arnaout, M.A. (1990) Blood **75**:1037.
5. Postigo, A.A. *et al.* (1991) J. Exp. Med. **174**:1313.
6. Beyer, M. *et al.* (2005) Respir. Res. **6**:70.
7. Nicolaou, F. *et al.* (2003) Blood **101**:4033.
8. Vorup-Jensen, T. *et al.* (2003) Proc. Natl. Acad. Sci. USA **100**:1873.
9. Bilsland, C.A.G. *et al.* (1994) J. Immunol. **152**:4582.
10. Pendu, R. *et al.* (2006) Blood **108**:3746.
11. Sadhu, C. *et al.* (2007) J. Leukoc. Biol. **81**:1395.
12. Schack, L. *et al.* (2009) J. Immunol. **182**:6943.
13. Choi, J. *et al.* (2005) Biochem. Biophys. Res. Commun. **331**:557.
14. Gang, J. *et al.* (2007) Mol. Cells **24**:240.
15. Vorup-Jensen, T. *et al.* (2007) J. Biol. Chem. **282**:30869.
16. Vorup-Jensen, T. *et al.* (2004) Proc. Natl. Acad. Sci. USA **102**:1614.
17. Kishimoto, T.K. *et al.* (1987) Cell **50**:193.