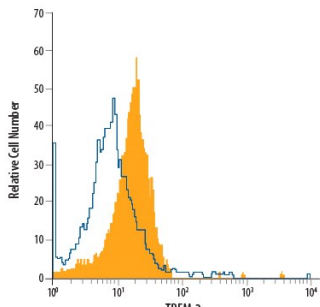
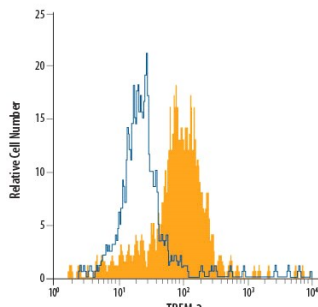
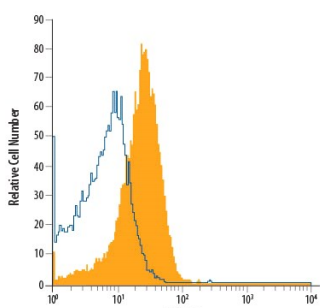
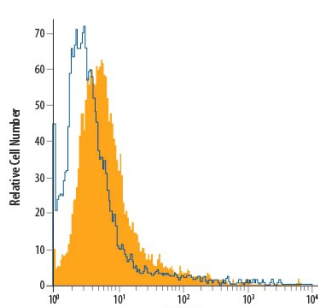


| DESCRIPTION | |
|---------------------------|--|
| Species Reactivity | Human/Mouse |
| Specificity | Detects human and mouse TREM-2 in direct ELISAs and Western blots. Stains TREM-2 transfectants but not TREM-1 transfectants. |
| Source | Monoclonal Rat IgG _{2B} Clone # 237920 |
| Purification | Protein A or G purified from hybridoma culture supernatant |
| Immunogen | Mouse myeloma cell line NS0-derived recombinant mouse TREM-2 extracellular domain Accession # Q99NH8 |
| Conjugate | Phycoerythrin Excitation Wavelength: 488 nm Emission Wavelength: 565-605 nm |
| Formulation | Supplied in a saline solution containing BSA and Sodium Azide. See Certificate of Analysis for details. *Contains <0.1% Sodium Azide, which is not hazardous at this concentration according to GHS classifications. Refer to the Safety Data Sheet (SDS) for additional information and handling instructions. |

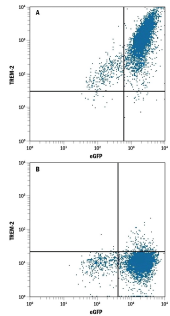
APPLICATIONS
Please Note: Optimal dilutions should be determined by each laboratory for each application. General Protocols are available in the Technical Information section on our website.

| | Recommended Concentration | Sample |
|-----------------------|-----------------------------|-----------|
| Flow Cytometry | 10 µL/10 ⁶ cells | See Below |

DATA

| | |
|---|--|
| <p>Flow Cytometry</p>  <p>Detection of TREM-2 in RAW 264.7 Mouse Cell Line by Flow Cytometry. RAW 264.7 mouse monocyte/macrophage cell line was stained with Rat Anti-Human/Mouse TREM-2 PE-conjugated Monoclonal Antibody (Catalog # FAB17291P, filled histogram) or isotype control antibody (Catalog # IC013P, open histogram). View our protocol for Staining Membrane-associated Proteins.</p> | <p>Flow Cytometry</p>  <p>Detection of TREM-2 in Human Blood Monocytes by Flow Cytometry. Human peripheral blood monocytes were stained with Rat Anti-Human/Mouse TREM-2 PE-conjugated Monoclonal Antibody (Catalog # FAB17291P, filled histogram) or isotype control antibody (Catalog # IC013P, open histogram). View our protocol for Staining Membrane-associated Proteins.</p> |
| <p>Flow Cytometry</p>  <p>Detection of TREM-2 in THP-1 Human Cell Line by Flow Cytometry. THP-1 human acute monocytic leukemia cell line was stained with Rat Anti-Human/Mouse TREM-2 PE-conjugated Monoclonal Antibody (Catalog # FAB17291P, filled histogram) or isotype control antibody (Catalog # IC013P, open histogram). View our protocol for Staining Membrane-associated Proteins.</p> | <p>Flow Cytometry</p>  <p>Detection of TREM-2 in Human Mature Dendritic Cells by Flow Cytometry. Human mature dendritic cells were stained with Rat Anti-Human/Mouse TREM-2 PE-conjugated Monoclonal Antibody (Catalog # FAB17291P, filled histogram) or isotype control antibody (Catalog # IC013P, open histogram). View our protocol for Staining Membrane-associated Proteins.</p> |

Flow Cytometry



Detection of TREM-2 in HEK293 Human Cell Line Transfected with eGFP and either Human TREM-2 or Human TREM-1 by Flow Cytometry. HEK293 human embryonic kidney cell line transfected with eGFP and either (A) human TREM-2 or (B) human TREM-1 was stained with Rat Anti-Human/Mouse TREM-2 PE-conjugated Monoclonal Antibody (Catalog # FAB17291P). Quadrant markers were set based on control antibody staining (Catalog # IC013P). View our protocol for [Staining Membrane-associated Proteins](#).

PREPARATION AND STORAGE

Shipping The product is shipped with polar packs. Upon receipt, store it immediately at the temperature recommended below.

Stability & Storage **Protect from light. Do not freeze.**

- 12 months from date of receipt, 2 to 8 °C as supplied.

Protect from light.

BACKGROUND

TREM-2 is a single Ig domain receptor expressed by cells of myeloid lineage. Two closely related transcripts were reported in mouse and designated TREM-2a and TREM-2b. TREM-2b is a pattern recognition receptor that binds anionic ligands. TREM-2 associates with the adapter protein DAP12 to deliver an activating signal that plays a role in both innate and adaptive immune responses.