

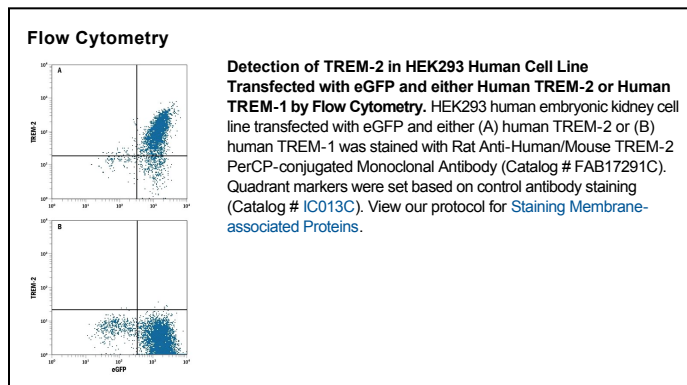
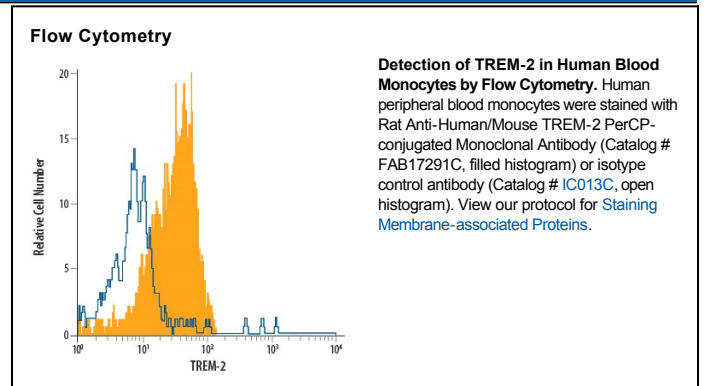
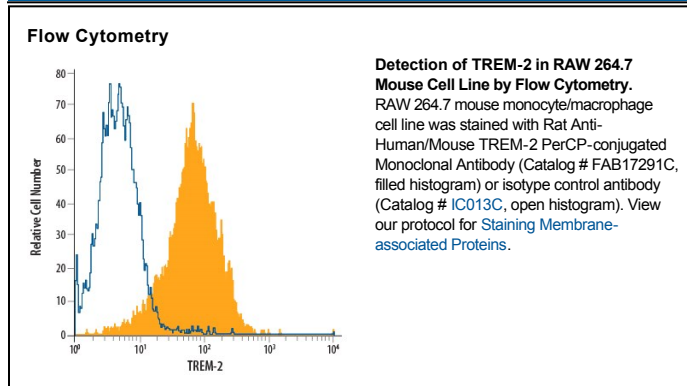
DESCRIPTION	
Species Reactivity	Human/Mouse
Specificity	Detects human and mouse TREM-2 in direct ELISAs and Western blots. Stains TREM-2 transfectants but not TREM-1 transfectants.
Source	Monoclonal Rat IgG _{2B} Clone # 237920
Purification	Protein A or G purified from hybridoma culture supernatant
Immunogen	Mouse myeloma cell line NS0-derived recombinant mouse TREM-2 extracellular domain Accession # Q99NH8
Conjugate	PerCP (Peridinin-chlorophyll Protein Complex) Excitation Wavelength: 482 and 564 nm Emission Wavelength: 675 nm
Formulation	Supplied in a saline solution containing BSA and Sodium Azide. See Certificate of Analysis for details. *Contains <0.1% Sodium Azide, which is not hazardous at this concentration according to GHS classifications. Refer to the Safety Data Sheet (SDS) for additional information and handling instructions.

APPLICATIONS

Please Note: Optimal dilutions should be determined by each laboratory for each application. *General Protocols* are available in the *Technical Information* section on our website.

	Recommended Concentration	Sample
Flow Cytometry	10 μ L/10 ⁶ cells	See Below

DATA



PREPARATION AND STORAGE

Shipping	The product is shipped with polar packs. Upon receipt, store it immediately at the temperature recommended below.
Stability & Storage	Protect from light. Do not freeze. <ul style="list-style-type: none"> 12 months from date of receipt, 2 to 8 °C as supplied.

Human/Mouse TREM-2 PerCP-conjugated Antibody

Monoclonal Rat IgG_{2B} Clone # 237920

Catalog Number: FAB17291C
100 TESTS

BACKGROUND

TREM-2 is a single Ig domain receptor expressed by cells of myeloid lineage. Two closely related transcripts were reported in mouse and designated TREM-2a and TREM-2b. TREM-2b is a pattern recognition receptor that binds anionic ligands. TREM-2 associates with the adapter protein DAP12 to deliver an activating signal that plays a role in both innate and adaptive immune responses.