

DESCRIPTION

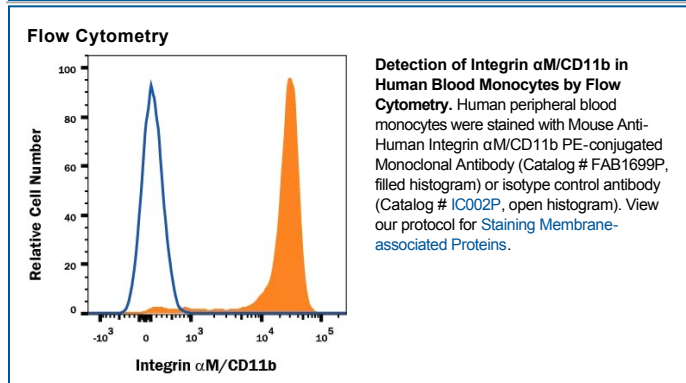
Species Reactivity	Human
Specificity	Detects human Integrin α M/CD11b.
Source	Monoclonal Mouse IgG ₁ Clone # ICRF44
Purification	Protein A or G purified from hybridoma culture supernatant
Immunogen	Human rheumatoid synovial cells and monocytes
Conjugate	Phycoerythrin Excitation Wavelength: 488 nm Emission Wavelength: 565-605 nm
Formulation	Supplied in a saline solution containing BSA and Sodium Azide. See Certificate of Analysis for details. *Contains <0.1% Sodium Azide, which is not hazardous at this concentration according to GHS classifications. Refer to the Safety Data Sheet (SDS) for additional information and handling instructions.

APPLICATIONS

Please Note: Optimal dilutions should be determined by each laboratory for each application. *General Protocols* are available in the *Technical Information* section on our website.

	Recommended Concentration	Sample
Flow Cytometry	10 μ L/10 ⁶ cells	See Below

DATA



PREPARATION AND STORAGE

Shipping	The product is shipped with polar packs. Upon receipt, store it immediately at the temperature recommended below.
Stability & Storage	Protect from light. Do not freeze. ● 12 months from date of receipt, 2 to 8 °C as supplied.

BACKGROUND

The Integrin family proteins are heterodimeric transmembrane receptors composed of an α and a β subunit. The Integrin α M subunit, also known as MAC-1 α subunit or CD11b, combines with the Integrin β 2 subunit (CD18) to form the non-covalent heterodimer Integrin α M/ β 2, also known as MAC-1 and Complement Receptor type 3 (CR3). Integrin α M/ β 2 is expressed on granulocytes, macrophages, dendritic cells and natural killer cells. Upon activation, α M/ β 2 can bind several ligands (including ICAM-1, Fibrinogen and the C3 Complement Fragment C3bi) to mediate phagocyte adhesion, migration and ingestion of complement-opsonized particles.