

DESCRIPTION

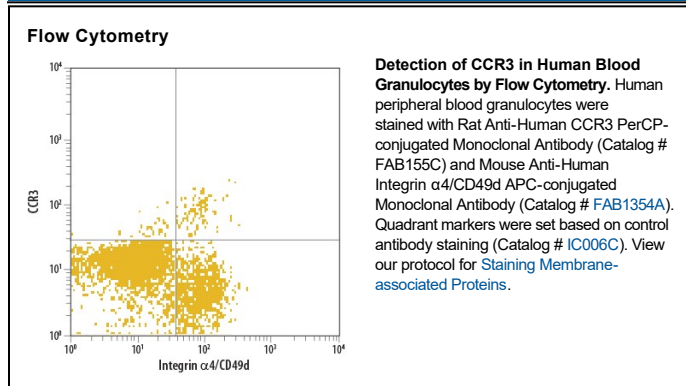
Species Reactivity	Human
Specificity	Detects human CCR3 transfectants in flow cytometry. In flow cytometry, no cross-reactivity with CCR1, CCR2, CCR5, and CCR6 transfectants or the parental cell line is observed. Detects CCR3 on peripheral blood eosinophils.
Source	Monoclonal Rat IgG _{2A} Clone # 61828
Purification	Protein A or G purified from hybridoma culture supernatant
Immunogen	Y3 rat myeloid cell line transfected with human CCR3 Accession # P51677
Conjugate	PerCP (Peridinin-chlorophyll Protein Complex) Excitation Wavelength: 482 and 564 nm Emission Wavelength: 675 nm
Formulation	Supplied in a saline solution containing BSA and Sodium Azide. See Certificate of Analysis for details. *Contains <0.1% Sodium Azide, which is not hazardous at this concentration according to GHS classifications. Refer to the Safety Data Sheet (SDS) for additional information and handling instructions.

APPLICATIONS

Please Note: Optimal dilutions should be determined by each laboratory for each application. *General Protocols* are available in the *Technical Information* section on our website.

	Recommended Concentration	Sample
Flow Cytometry	10 μ L/10 ⁶ cells	See Below

DATA



PREPARATION AND STORAGE

Shipping	The product is shipped with polar packs. Upon receipt, store it immediately at the temperature recommended below.
Stability & Storage	Protect from light. Do not freeze. <ul style="list-style-type: none"> 12 months from date of receipt, 2 to 8 °C as supplied.

BACKGROUND

CCR3 is a G protein-linked seven transmembrane chemokine receptor that preferentially binds eotaxin and eotaxin-2.