

DESCRIPTION

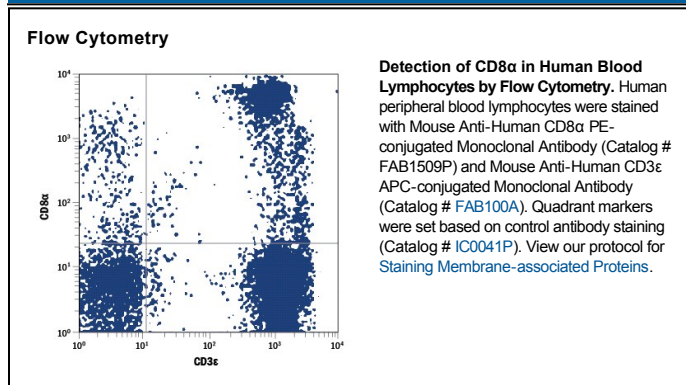
| | |
|---------------------------|--|
| Species Reactivity | Human |
| Specificity | Detects human CD8 α in direct ELISAs. In direct ELISAs, no cross-reactivity with mouse CD8 α is observed. |
| Source | Monoclonal Mouse IgG _{2B} Clone # 37006 |
| Purification | Protein A or G purified from hybridoma culture supernatant |
| Immunogen | Mouse myeloma cell line NS0-derived recombinant human CD8 α Ser22-Val198 Accession # NP_741969 |
| Conjugate | Phycoerythrin Excitation Wavelength: 488 nm Emission Wavelength: 565-605 nm |
| Formulation | Supplied in a saline solution containing BSA and Sodium Azide. See Certificate of Analysis for details. *Contains <0.1% Sodium Azide, which is not hazardous at this concentration according to GHS classifications. Refer to the Safety Data Sheet (SDS) for additional information and handling instructions. |

APPLICATIONS

Please Note: Optimal dilutions should be determined by each laboratory for each application. *General Protocols* are available in the *Technical Information* section on our website.

| | Recommended Concentration | Sample |
|-----------------------|----------------------------------|---------------|
| Flow Cytometry | 10 μ L/10 ⁶ cells | See Below |

DATA



PREPARATION AND STORAGE

Shipping The product is shipped with polar packs. Upon receipt, store it immediately at the temperature recommended below.

Stability & Storage **Protect from light. Do not freeze.**

- 12 months from date of receipt, 2 to 8 °C as supplied.

BACKGROUND

CD8 is a heterodimeric glycoprotein consisting of an α and β chain. It is expressed on cytolytic T cells and functions in conjunction with the T cell receptor in the recognition of MHC/peptide complexes.