

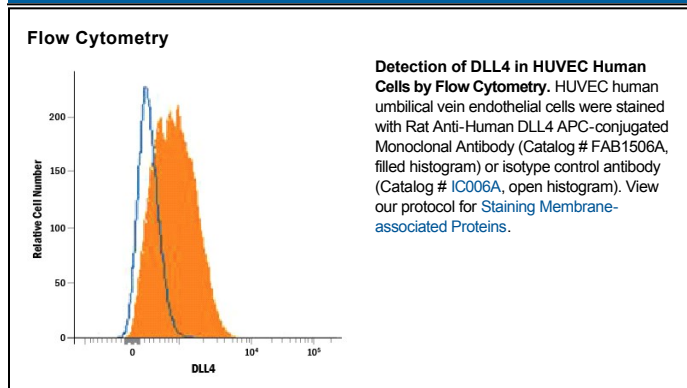
DESCRIPTION	
<b>Species Reactivity</b>	Human
<b>Specificity</b>	Detects human DLL4 in direct ELISAs.
<b>Source</b>	Monoclonal Rat IgG <sub>2A</sub> Clone # 447506
<b>Purification</b>	Protein A or G purified from hybridoma culture supernatant
<b>Immunogen</b>	Mouse myeloma cell line NS0-derived recombinant human DLL4 Ser27-Pro524 Accession # Q9NR61
<b>Conjugate</b>	Allophycocyanin Excitation Wavelength: 620-650 nm Emission Wavelength: 660-670 nm
<b>Formulation</b>	Supplied in a saline solution containing BSA and Sodium Azide. See Certificate of Analysis for details.  *Contains <0.1% Sodium Azide, which is not hazardous at this concentration according to GHS classifications. Refer to the Safety Data Sheet (SDS) for additional information and handling instructions.

## APPLICATIONS

**Please Note:** Optimal dilutions should be determined by each laboratory for each application. *General Protocols* are available in the *Technical Information* section on our website.

	Recommended Concentration	Sample
<b>Flow Cytometry</b>	10 $\mu$ L/10 <sup>6</sup> cells	See Below

## DATA



## PREPARATION AND STORAGE

<b>Shipping</b>	The product is shipped with polar packs. Upon receipt, store it immediately at the temperature recommended below.
<b>Stability &amp; Storage</b>	<b>Protect from light. Do not freeze.</b> <ul style="list-style-type: none"> <li>12 months from date of receipt, 2 to 8 °C as supplied.</li> </ul>

## BACKGROUND

Delta-like Ligand 4 (DLL4) is a transmembrane protein that contains one DSL domain and eight tandem EGF-like repeats. DLL4 is expressed on arterial endothelial cells where it signals through Notch 1 and Notch 4. DLL4 expression is induced by VEGF. It negatively regulates the proliferation of endothelial tip cells during vascular sprouting while promoting endothelial cell maturation. Blocking both DLL4 and VEGF can synergistically suppress tumor growth by promoting dysregulated angiogenesis. Within the extracellular domain, human DLL4 shares 85% amino acid sequence identity with mouse and rat DLL4.