

DESCRIPTION

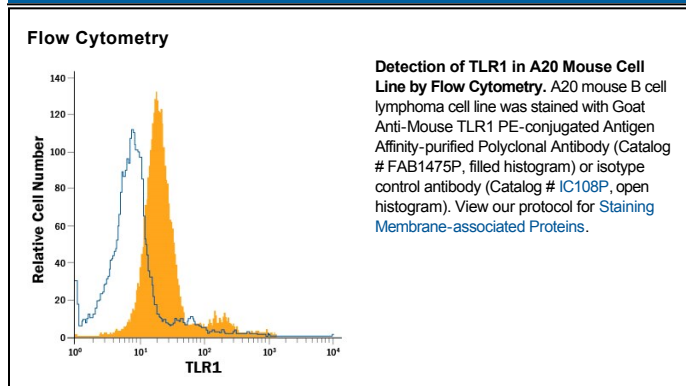
Species Reactivity	Mouse
Specificity	Detects mouse TLR1 in direct ELISAs and Western blots. In direct ELISAs and Western blots, approximately 30% cross-reactivity with recombinant mouse (rm) TLR6 is observed, 5% cross-reactivity with recombinant human (rh) TLR1 and rmTLR2 is observed, and less than 2% cross-reactivity with rhTLR3 and rhTLR4 is observed.
Source	Polyclonal Goat IgG
Purification	Antigen Affinity-purified
Immunogen	Mouse myeloma cell line NS0-derived recombinant mouse TLR1 Ser25-Asp581 Accession # Q9EPQ1
Conjugate	Phycoerythrin Excitation Wavelength: 488 nm Emission Wavelength: 565-605 nm
Formulation	Supplied in a saline solution containing BSA and Sodium Azide. See Certificate of Analysis for details. *Contains <0.1% Sodium Azide, which is not hazardous at this concentration according to GHS classifications. Refer to the Safety Data Sheet (SDS) for additional information and handling instructions.

APPLICATIONS

Please Note: Optimal dilutions should be determined by each laboratory for each application. *General Protocols* are available in the *Technical Information* section on our website.

	Recommended Concentration	Sample
Flow Cytometry	10 μ L/10 ⁶ cells	See Below

DATA



PREPARATION AND STORAGE

Shipping	The product is shipped with polar packs. Upon receipt, store it immediately at the temperature recommended below.
Stability & Storage	Protect from light. Do not freeze. <ul style="list-style-type: none"> ● 12 months from date of receipt, 2 to 8 °C as supplied.

BACKGROUND

The Toll-like family of molecules are type I transmembrane proteins that serve as pattern recognition receptors for microbial pathogens. There are at least twelve mouse and ten human TLRs that activate the innate immune system following exposure to a variety of microbial species (1, 2). TLRs contain a large number of leucine-rich repeats (LRRs) and a cytoplasmic tail with one Toll/IL-1 receptor (TIR) domain. Mature mouse TLR1 consists of a 557 amino acid (aa) extracellular domain (ECD) with 20 LRRs, a 21 aa transmembrane segment, and a 192 aa cytoplasmic domain (3, 4). Within the ECD, mouse TLR1 shares 60% aa sequence identity with mouse TLR6 and 19%–27% aa sequence identity with mouse TLR2, -3, -4, -5, -7, -8, -9, -11, -12, and -13. It shares 73% and 86% aa sequence identity with human and rat TLR1, respectively. TLR1 is expressed on the surface of macrophages, dendritic cells, and tonsillar epithelial cells in ligand-independent association with TLR2 (5–8). TLR2 additionally associates with TLR6 to form a functional complex with specificity for distinct but related microbial ligands (9–11). TLR1 and TLR2 cooperate in the recognition of bacterial and protozoal triacylated lipopeptides and glycosylphosphatidylinositols (6, 10–12). Ligand binding induces TLR1 localization to lipid rafts followed by receptor internalization and activation of NFκB (7, 11, 13).

References:

1. Miyake, K. (2007) *Semin. Immunol.* **19**:3.
2. Hopkins, P.A. and S. Sriskandan (2005) *Clin. Exp. Immunol.* **140**:395.
3. SwissProt # Q9EPQ1.
4. Matsushima, N. *et al.* (2007) *BMC Genomics* **8**:124.
5. Ochoa, M.-T. *et al.* (2003) *Immunology* **108**:10.
6. Takeuchi, O. *et al.* (2002) *J. Immunol.* **169**:10.
7. Triantafyllou, M. *et al.* (2006) *J. Biol. Chem.* **281**:31002.
8. Sandor, F. *et al.* (2003) *J. Cell Biol.* **162**:1099.
9. Nakao, Y. *et al.* (2005) *J. Immunol.* **174**:1566.
10. Ozinsky, A. *et al.* (2000) *Proc. Natl. Acad. Sci.* **97**:13766.
11. Lee, J.Y. *et al.* (2004) *J. Biol. Chem.* **279**:16971.
12. Krishnegowda, G. *et al.* (2005) *J. Biol. Chem.* **280**:8606.
13. Nishiya, T. and A.L. DeFranco (2004) *J. Biol. Chem.* **279**:19008.