

DESCRIPTION

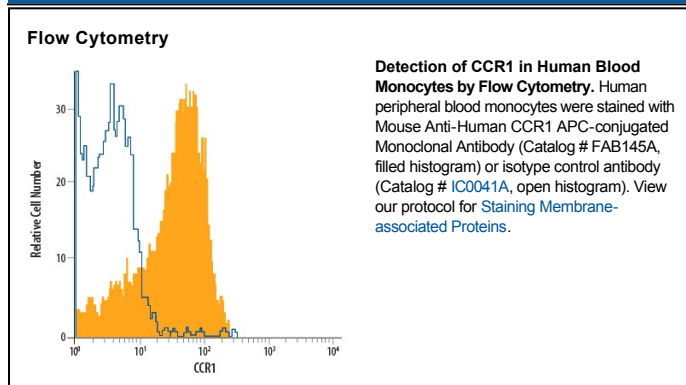
Species Reactivity	Human
Specificity	Detects human CCR1. Reacts specifically with human CCR1 transfectants and not the parental cell line in flow cytometry. No cross-reactivity with CCR5 transfectants is observed.
Source	Monoclonal Mouse IgG _{2B} Clone # 53504
Purification	Protein A or G purified from hybridoma culture supernatant
Immunogen	Swiss 3T3 mouse cell line transfected with human CCR1 Accession # P32246
Conjugate	Allophycocyanin Excitation Wavelength: 620-650 nm Emission Wavelength: 660-670 nm
Formulation	Supplied in a saline solution containing BSA and Sodium Azide. See Certificate of Analysis for details. *Contains <0.1% Sodium Azide, which is not hazardous at this concentration according to GHS classifications. Refer to the Safety Data Sheet (SDS) for additional information and handling instructions.

APPLICATIONS

Please Note: Optimal dilutions should be determined by each laboratory for each application. *General Protocols* are available in the *Technical Information* section on our website.

	Recommended Concentration	Sample
Flow Cytometry	10 μ L/10 ⁶ cells	See Below

DATA



PREPARATION AND STORAGE

Shipping	The product is shipped with polar packs. Upon receipt, store it immediately at the temperature recommended below.
Stability & Storage	Protect from light. Do not freeze. <ul style="list-style-type: none"> 12 months from date of receipt, 2 to 8 °C as supplied.

BACKGROUND

CCR1 is a 7 transmembrane domain chemokine receptor expressed on T cells, B cells, monocytes, dendritic cells, and eosinophils. It binds the chemokines CCL3, 4, 5, and 7.