

DESCRIPTION

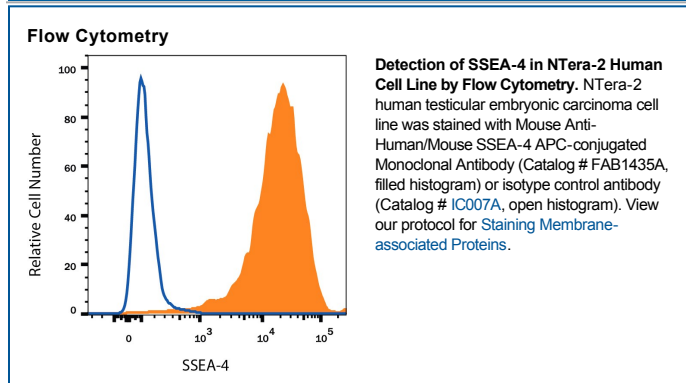
Species Reactivity	Human/Mouse
Specificity	Recognizes a carbohydrate epitope of SSEA-4 (1, 2).
Source	Monoclonal Mouse IgG ₃ Clone # MC-813-70
Purification	Protein A or G purified from hybridoma culture supernatant
Immunogen	2120Ep human embryonal carcinoma cell line
Conjugate	Allophycocyanin Excitation Wavelength: 620-650 nm Emission Wavelength: 660-670 nm
Formulation	Supplied in a saline solution containing BSA and Sodium Azide. See Certificate of Analysis for details. *Contains <0.1% Sodium Azide, which is not hazardous at this concentration according to GHS classifications. Refer to the Safety Data Sheet (SDS) for additional information and handling instructions.

APPLICATIONS

Please Note: Optimal dilutions should be determined by each laboratory for each application. *General Protocols* are available in the *Technical Information* section on our website.

	Recommended Concentration	Sample
Flow Cytometry	10 µL/10 ⁶ cells	See Below

DATA



PREPARATION AND STORAGE

Shipping	The product is shipped with polar packs. Upon receipt, store it immediately at the temperature recommended below.
Stability & Storage	Protect from light. Do not freeze. ● 12 months from date of receipt, 2 to 8 °C as supplied.

BACKGROUND

SSEA-4 is expressed on the surface of human embryonal carcinoma (EC) cells (the pluripotent stem cells of teratocarcinomas), human embryonic germ cells (EG), and human embryonic stem cells (ES). Expression of SSEA-4 is down-regulated following differentiation of human EC cells. In contrast, the differentiation of murine EC and ES cells may be accompanied by an increase in SSEA-4 expression (1-4).

References:

1. Shevinsky, L.H. *et al.* (1982) *Cell* **30**:697.
2. Kannagi, R. *et al.* (1983) *EMBO J.* **2**:2355.
3. Thomson, J.A. and J.S. Odorico (2000) *Trends Biotechnol.* **18**:53.
4. Draper, J.S. *et al.* (2002) *J. Anat.* **200**:249.