

## DESCRIPTION

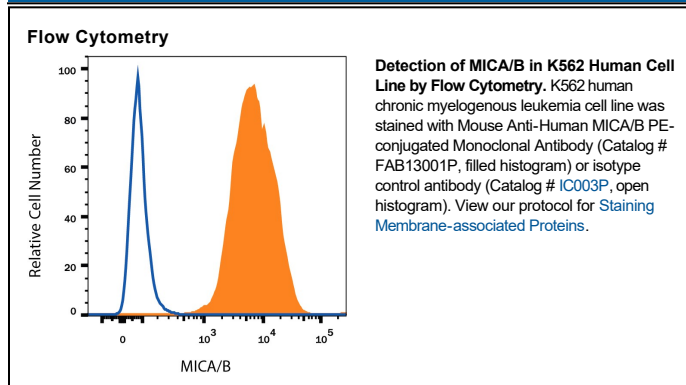
<b>Species Reactivity</b>	Human
<b>Specificity</b>	Detects human MICA/B in direct ELISAs.
<b>Source</b>	Monoclonal Mouse IgG <sub>2A</sub> Clone # 159207
<b>Purification</b>	Protein A or G purified from hybridoma culture supernatant
<b>Immunogen</b>	BaF3 mouse pro-B cell line transfected with human MICA Accession # Q29983
<b>Conjugate</b>	Phycoerythrin Excitation Wavelength: 488 nm Emission Wavelength: 565-605 nm
<b>Formulation</b>	Supplied in a saline solution containing BSA and Sodium Azide. See Certificate of Analysis for details.  *Contains <0.1% Sodium Azide, which is not hazardous at this concentration according to GHS classifications. Refer to the Safety Data Sheet (SDS) for additional information and handling instructions.

## APPLICATIONS

**Please Note:** Optimal dilutions should be determined by each laboratory for each application. *General Protocols* are available in the *Technical Information* section on our website.

	<b>Recommended Concentration</b>	<b>Sample</b>
<b>Flow Cytometry</b>	10 $\mu$ L/10 <sup>6</sup> cells	See Below

## DATA



## PREPARATION AND STORAGE

<b>Shipping</b>	The product is shipped with polar packs. Upon receipt, store it immediately at the temperature recommended below.
<b>Stability &amp; Storage</b>	<b>Protect from light. Do not freeze.</b> ● 12 months from date of receipt, 2 to 8 °C as supplied.

## BACKGROUND

MICA and MICB are stress-induced type I transmembrane proteins that function as ligands for NKG2D. They are distantly related to MHC class I proteins and are expressed on epithelial tumors and in response to infections.