

DESCRIPTION

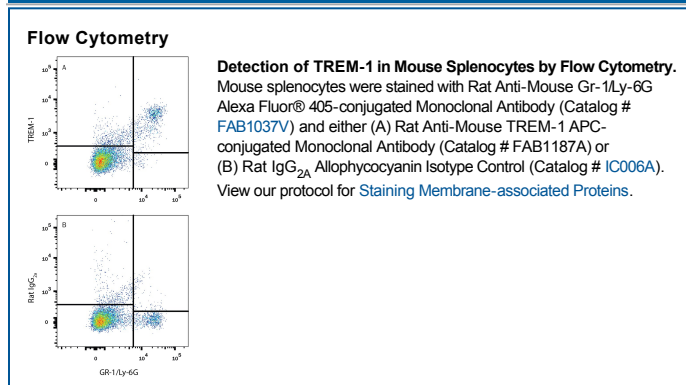
| | |
|---------------------------|--|
| Species Reactivity | Mouse |
| Specificity | Detects mouse TREM-1 in direct ELISAs and Western blots. In Western blots, no cross-reactivity with recombinant mouse TREM-2B, recombinant human (rh) TREM-1, or rhTREM-2 is observed. |
| Source | Monoclonal Rat IgG _{2A} Clone # 174031 |
| Purification | Protein A or G purified from hybridoma culture supernatant |
| Immunogen | Mouse myeloma cell line NS0-derived recombinant mouse TREM-1 Ala21-Ser202 Accession # Q9JKE2 |
| Conjugate | Allophycocyanin Excitation Wavelength: 620-650 nm Emission Wavelength: 660-670 nm |
| Formulation | Supplied in a saline solution containing BSA and Sodium Azide. See Certificate of Analysis for details. *Contains <0.1% Sodium Azide, which is not hazardous at this concentration according to GHS classifications. Refer to the Safety Data Sheet (SDS) for additional information and handling instructions. |

APPLICATIONS

Please Note: Optimal dilutions should be determined by each laboratory for each application. *General Protocols* are available in the *Technical Information* section on our website.

| | Recommended Concentration | Sample |
|-----------------------|----------------------------------|-----------|
| Flow Cytometry | 10 μ L/10 ⁶ cells | See Below |

DATA



PREPARATION AND STORAGE

Shipping The product is shipped with polar packs. Upon receipt, store it immediately at the temperature recommended below.

Stability & Storage **Protect from light. Do not freeze.**

- 12 months from date of receipt, 2 to 8 °C as supplied.

BACKGROUND

TREM-1 (Triggering Receptor Expressed on Myeloid cells) is a type I transmembrane protein having a single Ig-like domain. It associates with the adapter protein, DAP12, to deliver an activating signal. Several other TREM family members have been reported that are structurally similar but share less than 30% amino acid identity. TREM-1 is expressed on blood neutrophils and a subset of monocytes, and expression is up-regulated by bacterial LPS. Engagement of TREM-1 with a monoclonal antibody leads to expression of IL-8, MCP-1, and TNF- α suggesting that this receptor plays an important role in inflammatory responses. TREM-1 is expressed at high levels on neutrophils of patients with microbial sepsis and in mice with LPS-induced shock. Blockade of TREM-1 with a TREM-1/Fc fusion protein protected mice against LPS-induced shock.

References:

1. Bouchon, A. (2000) J. Immunol. **164**:4991.
2. Bouchon, A. (2001) Nature **410**:1103.
3. Nathan, C. and A. Ding (2001) Nature Med. **7**:530.