

## DESCRIPTION

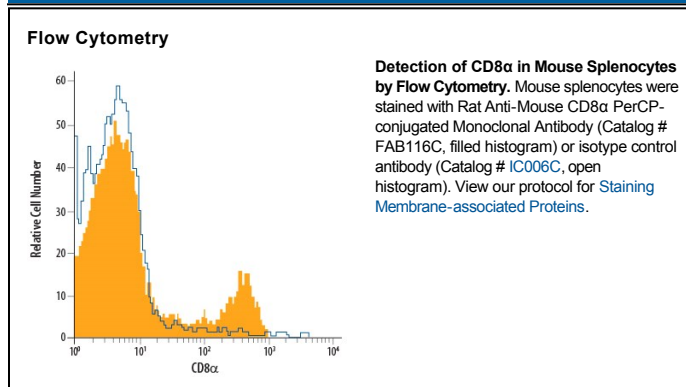
<b>Species Reactivity</b>	Mouse
<b>Specificity</b>	Detects both the $\alpha$ and $\alpha'$ chains of mouse CD8 (1).
<b>Source</b>	Monoclonal Rat IgG <sub>2A</sub> Clone # 53-6.7
<b>Purification</b>	Protein A or G purified from hybridoma culture supernatant
<b>Immunogen</b>	Mouse thymus or spleen
<b>Conjugate</b>	PerCP (Peridinin-chlorophyll Protein Complex) Excitation Wavelength: 482 and 564 nm Emission Wavelength: 675 nm
<b>Formulation</b>	Supplied in a saline solution containing BSA and Sodium Azide. See Certificate of Analysis for details.  *Contains <0.1% Sodium Azide, which is not hazardous at this concentration according to GHS classifications. Refer to the Safety Data Sheet (SDS) for additional information and handling instructions.

## APPLICATIONS

**Please Note:** Optimal dilutions should be determined by each laboratory for each application. *General Protocols* are available in the *Technical Information* section on our website.

	<b>Recommended Concentration</b>	<b>Sample</b>
<b>Flow Cytometry</b>	10 $\mu$ L/10 <sup>6</sup> cells	See Below

## DATA



## PREPARATION AND STORAGE

<b>Shipping</b>	The product is shipped with polar packs. Upon receipt, store it immediately at the temperature recommended below.
<b>Stability &amp; Storage</b>	<b>Protect from light. Do not freeze.</b> <ul style="list-style-type: none"> <li>● 12 months from date of receipt, 2 to 8 °C as supplied.</li> </ul>

## BACKGROUND

CD8, also known as Ly-2, is a heterodimeric glycoprotein consisting of an  $\alpha$  and  $\beta$  chain. It is expressed on cytolytic T cells and functions in conjunction with the T cell receptor in the recognition of MHC/peptide complexes. Mouse CD8 (containing an  $\alpha$ /Ly-2 or  $\alpha'$ /Ly-2 chain) is an antigen co-receptor on the T cell surface which interacts with MHC I molecules on antigen presenting cells (1). CD8 $\alpha\beta$  heterodimer is expressed on a subpopulation of mature T cells (2, 3). CD8 $\alpha$ , without CD8 $\beta$ , has been detected on subsets of  $\gamma\delta$  TCR-bearing T cells (4), intestinal intrathymic lymphocytes (5, 6) and dendritic cells (7, 8).

### References:

1. Bierer, B.E. *et al.* (1989) *Annu. Rev. Immunol.* **7**:579.
2. Ledbetter, J.A. *et al.* (1980) *J. Exp. Med.* **152**:280.
3. Hayakawa, K. *et al.* (1994) *Science* **263**:1131.
4. MacDonald, H.R. *et al.* (1990) *Eur. J. Immunol.* **20**:927.
5. Rocha, B. *et al.* (1992) *Immunol. Today* **13**:449.
6. Wang, J. and J.R. Klein (1994) *Science* **265**:1860.
7. Vermech, D. *et al.* (1992) *J. Exp. Med.* **176**:47.
8. Suss, G. and K. Shortman (1996) *J. Exp. Med.* **183**:1789.