

DESCRIPTION

Species Reactivity	Human
Specificity	Detects human Integrin $\alpha 4 \beta 1$ in direct ELISAs. This non-therapeutic antibody uses the same variable region sequence as the therapeutic antibody Natalizumab. This product is for research use only.
Source	Recombinant Monoclonal Human IgG ₁ Clone # Hu114
Purification	Protein A or G purified from cell culture supernatant
Immunogen	Human Integrin $\alpha 4 \beta 1$
Conjugate	Alexa Fluor 647 Excitation Wavelength: 650 nm Emission Wavelength: 668 nm
Formulation	Supplied 0.2 mg/mL in a saline solution containing BSA and Sodium Azide. See Certificate of Analysis for details. *Contains <0.1% Sodium Azide, which is not hazardous at this concentration according to GHS classifications. Refer to the Safety Data Sheet (SDS) for additional information and handling instructions.

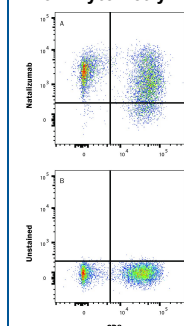
APPLICATIONS

Please Note: Optimal dilutions should be determined by each laboratory for each application. *General Protocols* are available in the Technical Information section on our website.

Flow Cytometry	Titration recommended for optimal concentration with starting range of 0.1-1 µg/1 million cells. Sample used for this experiment was PBMC with CD3 costain.
-----------------------	---

DATA

Flow Cytometry



Detection of Integrin $\alpha 4 \beta 1$ in PBMC with CD3 costain cells by Flow Cytometry. PBMC with CD3 costain were stained with Mouse Anti-Human CD3 ϵ PE-conjugated Monoclonal Antibody (Catalog # FAB100P) and either (A) Human Anti-Human Integrin $\alpha 4 \beta 1$ (Research Grade Natalizumab Biosimilar) Alexa Fluor® 647-conjugated Monoclonal Antibody (Catalog # FAB10603R) or (B) unstained. View our protocol for [Staining Membrane-associated Proteins](#).

PREPARATION AND STORAGE

Shipping	The product is shipped with polar packs. Upon receipt, store it immediately at the temperature recommended below.
Stability & Storage	Protect from light. Do not freeze. • 12 months from date of receipt, 2 to 8 °C as supplied.

BACKGROUND

Natalizumab is a biosimilar directed against the extracellular domain of Human Integrin $\alpha 4 \beta 1$. It has been known to treat multiple sclerosis and Crohn's disease. Human Integrin $\alpha 4 \beta 1$ (Research Grade Natalizumab Biosimilar) Antibody is designed to be used in research use only.

PRODUCT SPECIFIC NOTICES

This product is provided under an agreement between Life Technologies Corporation and R&D Systems, Inc., and the manufacture, use, sale or import of this product is subject to one or more US patents and corresponding non-US equivalents, owned by Life Technologies Corporation and its affiliates. The purchase of this product conveys to the buyer the non-transferable right to use the purchased amount of the product and components of the product only in research conducted by the buyer (whether the buyer is an academic or for-profit entity). The sale of this product is expressly conditioned on the buyer not using the product or its components (1) in manufacturing; (2) to provide a service, information, or data to an unaffiliated third party for payment; (3) for therapeutic, diagnostic or prophylactic purposes; (4) to resell, sell, or otherwise transfer this product or its components to any third party, or for any other commercial purpose. Life Technologies Corporation will not assert a claim against the buyer of the infringement of the above patents based on the manufacture, use or sale of a commercial product developed in research by the buyer in which this product or its components was employed, provided that neither this product nor any of its components was used in the manufacture of such product. For information on purchasing a license to this product for purposes other than research, contact Life Technologies Corporation, Cell Analysis Business Unit, Business Development, 29851 Willow Creek Road, Eugene, OR 97402, Tel: (541) 465-8300. Fax: (541) 335-0354.