

DESCRIPTION

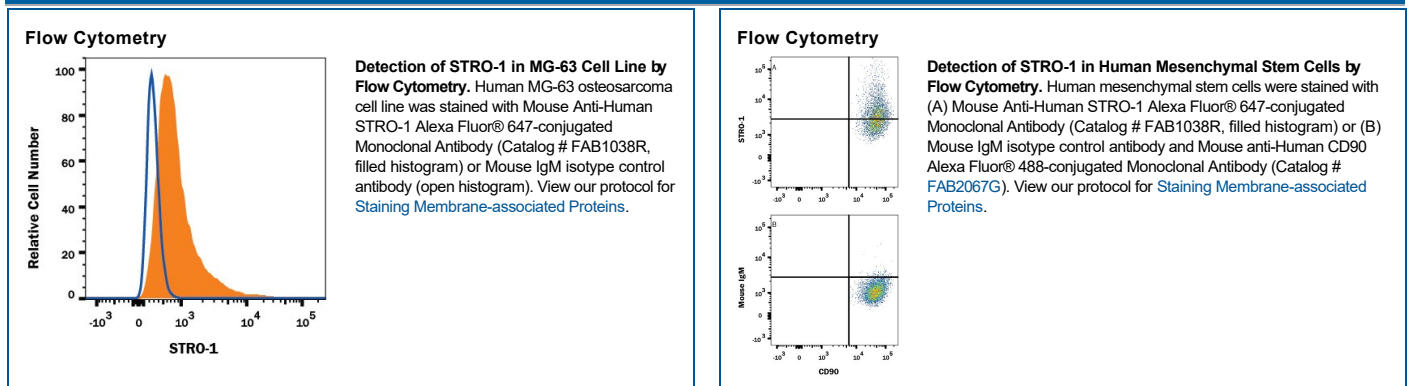
| | |
|---------------------------|--|
| Species Reactivity | Human |
| Specificity | Detects human STRO-1. |
| Source | Monoclonal Mouse IgM Clone # STRO-1 |
| Purification | IgM-specific Affinity-purified from hybridoma culture supernatant |
| Immunogen | Human CD34 ⁺ bone marrow cells |
| Conjugate | Alexa Fluor 647 Excitation Wavelength: 650 nm Emission Wavelength: 668 nm |
| Formulation | Supplied 0.2 mg/mL in a saline solution containing BSA and Sodium Azide. See Certificate of Analysis for details. *Contains <0.1% Sodium Azide, which is not hazardous at this concentration according to GHS classifications. Refer to the Safety Data Sheet (SDS) for additional information and handling instructions. |

APPLICATIONS

Please Note: Optimal dilutions should be determined by each laboratory for each application. [General Protocols](#) are available in the Technical Information section on our website.

| | Recommended Concentration | Sample |
|-----------------------|---------------------------------|-----------|
| Flow Cytometry | 0.25-1 µg/10 ⁶ cells | See Below |

DATA



PREPARATION AND STORAGE

| | |
|--------------------------------|--|
| Shipping | The product is shipped with polar packs. Upon receipt, store it immediately at the temperature recommended below. |
| Stability & Storage | Protect from light. Do not freeze. <ul style="list-style-type: none"> 12 months from date of receipt, 2 to 8 °C as supplied. |

BACKGROUND

STRO-1 is a cell surface protein expressed by bone marrow stromal cells and erythroid precursors. The frequency of colony forming units-fibroblasts (CFU-F) was enriched 100-fold in the STRO-1⁺/Glycophorin A⁺ population from bone marrow cells (1). The subset of marrow cells that expresses the STRO-1 antigen is capable of differentiating into multiple mesenchymal lineages including hematopoiesis-supportive stromal cells with a vascular smooth muscle-like phenotype, adipocytes, osteoblasts, and chondrocytes (2).

References:

1. Simmons, P.J. and B. Torok-Storb (1991) *Blood* **78**:55.
2. Dennis, J.E. *et al.* (2002) *Cells Tissues Organs* **170**:73.

Human STRO-1 Alexa Fluor® 647-conjugated Antibody

Monoclonal Mouse IgM Clone # STRO-1

Catalog Number: FAB1038R

100 µg

PRODUCT SPECIFIC NOTICES

This product is provided under an agreement between Life Technologies Corporation and R&D Systems, Inc, and the manufacture, use, sale or import of this product is subject to one or more US patents and corresponding non-US equivalents, owned by Life Technologies Corporation and its affiliates. The purchase of this product conveys to the buyer the non-transferable right to use the purchased amount of the product and components of the product only in research conducted by the buyer (whether the buyer is an academic or for-profit entity). The sale of this product is expressly conditioned on the buyer not using the product or its components (1) in manufacturing; (2) to provide a service, information, or data to an unaffiliated third party for payment; (3) for therapeutic, diagnostic or prophylactic purposes; (4) to resell, sell, or otherwise transfer this product or its components to any third party, or for any other commercial purpose. Life Technologies Corporation will not assert a claim against the buyer of the infringement of the above patents based on the manufacture, use or sale of a commercial product developed in research by the buyer in which this product or its components was employed, provided that neither this product nor any of its components was used in the manufacture of such product. For information on purchasing a license to this product for purposes other than research, contact Life Technologies Corporation, Cell Analysis Business Unit, Business Development, 29851 Willow Creek Road, Eugene, OR 97402, Tel: (541) 465-8300. Fax: (541) 335-0354.