

DESCRIPTION

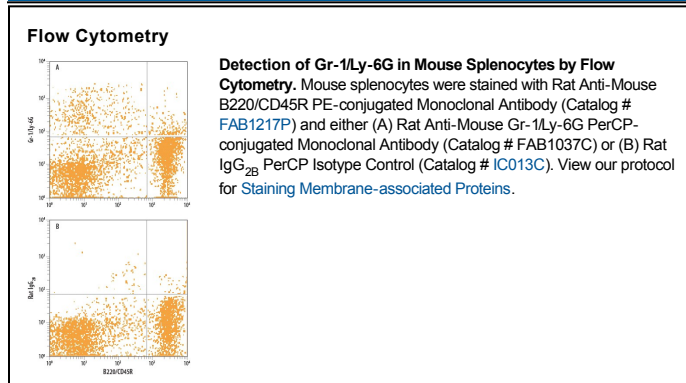
Species Reactivity	Mouse
Specificity	Detects mouse Gr-1/Ly-6G. Weak cross-reactivity with Ly-6C is observed.
Source	Monoclonal Rat IgG _{2B} Clone # RB6-8C5
Purification	Protein A or G purified from hybridoma culture supernatant
Immunogen	The immunogen for this antibody is Ly-6G (Gr-1, Gr1).
Conjugate	PerCP (Peridinin-chlorophyll Protein Complex) Excitation Wavelength: 482 and 564 nm Emission Wavelength: 675 nm
Formulation	Supplied in a saline solution containing BSA and Sodium Azide. See Certificate of Analysis for details. *Contains <0.1% Sodium Azide, which is not hazardous at this concentration according to GHS classifications. Refer to the Safety Data Sheet (SDS) for additional information and handling instructions.

APPLICATIONS

Please Note: Optimal dilutions should be determined by each laboratory for each application. *General Protocols* are available in the *Technical Information* section on our website.

	Recommended Concentration	Sample
Flow Cytometry	10 µL/10 ⁶ cells	See Below

DATA



PREPARATION AND STORAGE

Shipping	The product is shipped with polar packs. Upon receipt, store it immediately at the temperature recommended below.
Stability & Storage	Protect from light. Do not freeze. ● 12 months from date of receipt, 2 to 8 °C as supplied.

BACKGROUND

The myeloid differentiation antigen Gr-1 is a member of the Ly-6 family, Ly-6G (1). The RB6-8C5 antibody also reacts weakly with Ly-6C-transfected EL4 cells (2). In the periphery, this antibody specifically recognized granulocytes (3, 4).

References:

1. Spangrude, G.J. *et al.* (1988) *Science* **241**:58.
2. Fleming, T.J. *et al.* (1993) *J. Immunol.* **151**:2399.
3. Lewinsohn, D.M. *et al.* (1987) *J. Immunol.* **147**:22.
4. Lagasse, E. and I.L. Weissman (1996) *J. Immunol. Methods* **197**:139.