

DESCRIPTION

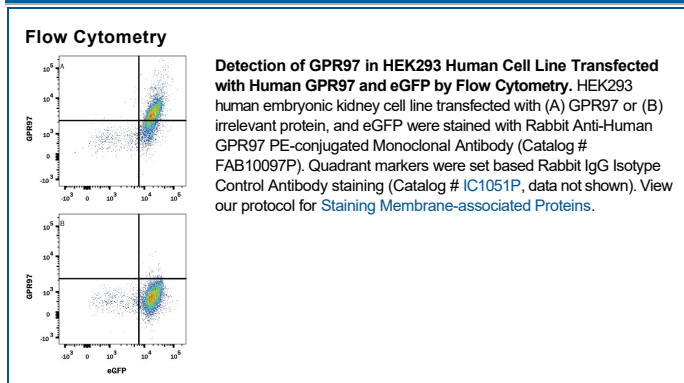
Species Reactivity	Human
Specificity	Detects human GPR97 in direct ELISAs.
Source	Recombinant Monoclonal Rabbit IgG Clone # 2435C
Purification	Protein A or G purified from cell culture supernatant
Immunogen	Human embryonic kidney cell, HEK293-transfected human GPR97 Met1-Leu249 Accession # Q86Y34
Conjugate	Phycoerythrin Excitation Wavelength: 488 nm Emission Wavelength: 565-605 nm
Formulation	Supplied in a saline solution containing BSA and Sodium Azide. See Certificate of Analysis for details. *Contains <0.1% Sodium Azide, which is not hazardous at this concentration according to GHS classifications. Refer to the Safety Data Sheet (SDS) for additional information and handling instructions.

APPLICATIONS

Please Note: Optimal dilutions should be determined by each laboratory for each application. [General Protocols](#) are available in the Technical Information section on our website.

	Recommended Concentration	Sample
Flow Cytometry	10 μ L/10 ⁶ cells	See Below

DATA



PREPARATION AND STORAGE

Shipping	The product is shipped at ambient temperature. Upon receipt, store it immediately at the temperature recommended below.
Stability & Storage	Protect from light. Do not freeze. <ul style="list-style-type: none"> 12 months from date of receipt, 2 to 8 °C as supplied.

BACKGROUND

Adhesion G protein-coupled receptor G3 (ADGRG3, GPR97 or PGR26) is an orphan GPCR receptor that in vitro regulates migration of lymphatic endothelial cells via the small GTPases RhoA and CDC42. GPR97 is a 549 aminoacids (aa) 7-transmembrane domain (7TM) receptor belonging to the secretin sub-family of GPCR. Human GPR97 is expressed in granulocytes and endothelial cells of the vasculature.