

#### DESCRIPTION

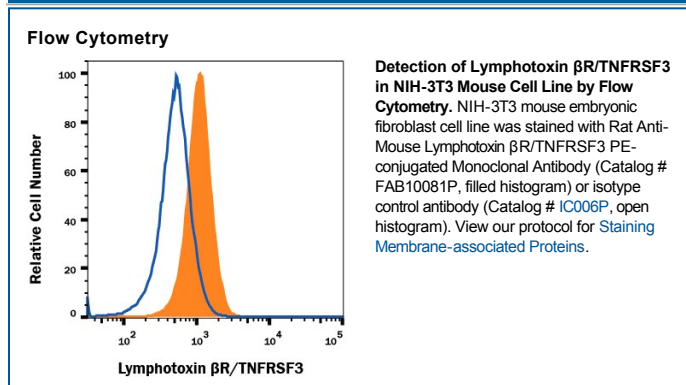
<b>Species Reactivity</b>	Mouse
<b>Specificity</b>	Detects mouse Lymphotoxin $\beta$ R in direct ELISAs and Western blots. In direct ELISAs, does not cross-react with recombinant mouse (rm) 4-1BB, rmBAFF R, rmCD27, rmCD30, rmCD40, recombinant human (rh) DR3, rhDR6, rmEDAR, rmFas, rmGITR, rmHVEM, rhLymphotoxin $\beta$ R, rmNGF R, rmOPG, rmOX40, rmRANK, rhREL1, rmTAJ, rmTNF RI, rmTNF RII, rhTRADD, rmTRAIL R2, rhTRAIL R3, rhTRAIL R4, or rmTWEAK R.
<b>Source</b>	Monoclonal Rat IgG <sub>2A</sub> Clone # 157108
<b>Purification</b>	Protein A or G purified from hybridoma culture supernatant
<b>Immunogen</b>	Mouse myeloma cell line NS0-derived recombinant mouse Lymphotoxin $\beta$ R/TNFRSF3 Ser28-Pro218 Accession # P50284
<b>Conjugate</b>	Phycoerythrin Excitation Wavelength: 488 nm Emission Wavelength: 565-605 nm
<b>Formulation</b>	Supplied in a saline solution containing BSA and Sodium Azide. See Certificate of Analysis for details.  *Contains <0.1% Sodium Azide, which is not hazardous at this concentration according to GHS classifications. Refer to the Safety Data Sheet (SDS) for additional information and handling instructions.

#### APPLICATIONS

**Please Note:** Optimal dilutions should be determined by each laboratory for each application. *General Protocols* are available in the *Technical Information* section on our website.

	<b>Recommended Concentration</b>	<b>Sample</b>
<b>Flow Cytometry</b>	10 $\mu$ L/10 <sup>6</sup> cells	See Below

#### DATA



#### PREPARATION AND STORAGE

<b>Shipping</b>	The product is shipped with polar packs. Upon receipt, store it immediately at the temperature recommended below.
<b>Stability &amp; Storage</b>	<b>Protect from light. Do not freeze.</b> <ul style="list-style-type: none"> <li>● 12 months from date of receipt, 2 to 8 °C as supplied.</li> </ul>

#### BACKGROUND

Lymphotoxin  $\beta$ R, now designated TNFRSF3, is a cell surface protein expressed in a variety of tissues. Lymphotoxin  $\beta$ R transduces signals following binding of LIGHT or the heterotrimeric lymphotoxin LT $\alpha$ 1/ $\beta$ 2 or LT $\alpha$ 2/ $\beta$ 1. It plays a critical role in controlling cellular immune functions and lymphoid organogenesis.