

DESCRIPTION

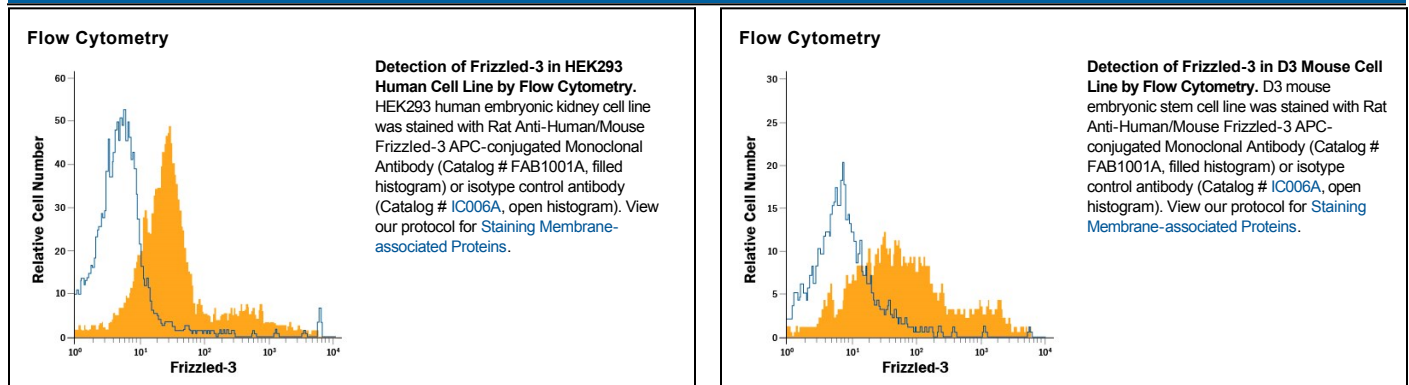
Species Reactivity	Human/Mouse
Specificity	Detects mouse Frizzled-3 in direct ELISAs and Western blots. In direct ELISAs, no cross-reactivity with recombinant mouse Frizzled-1, -4, -7, or -8 is observed. By flow cytometry and immunohistochemistry, this antibody also detects mouse Frizzled-3 on differentiated embryoid bodies derived from the mouse embryonic cell line, D3. This antibody also detects Frizzled-3 on human HEK293 cells by immunocytochemistry and flow cytometry.
Source	Monoclonal Rat IgG _{2A} Clone # 169310
Purification	Protein A or G purified from hybridoma culture supernatant
Immunogen	Mouse myeloma cell line NS0-derived recombinant mouse Frizzled-3 Met1-Val157 Accession # Q61086
Conjugate	Allophycocyanin Excitation Wavelength: 620-650 nm Emission Wavelength: 660-670 nm
Formulation	Supplied in a saline solution containing BSA and Sodium Azide. See Certificate of Analysis for details. *Contains <0.1% Sodium Azide, which is not hazardous at this concentration according to GHS classifications. Refer to the Safety Data Sheet (SDS) for additional information and handling instructions.

APPLICATIONS

Please Note: Optimal dilutions should be determined by each laboratory for each application. *General Protocols* are available in the *Technical Information* section on our website.

	Recommended Concentration	Sample
Flow Cytometry	10 μ L/10 ⁶ cells	See Below

DATA



PREPARATION AND STORAGE

Shipping	The product is shipped with polar packs. Upon receipt, store it immediately at the temperature recommended below.
Stability & Storage	Protect from light. Do not freeze. <ul style="list-style-type: none"> 12 months from date of receipt, 2 to 8 °C as supplied.

BACKGROUND

Frizzled-3 is an integral membrane protein that belongs to the Frizzled family of G-protein coupled receptors. Frizzleds function as receptors for Wnt proteins.