

DESCRIPTION

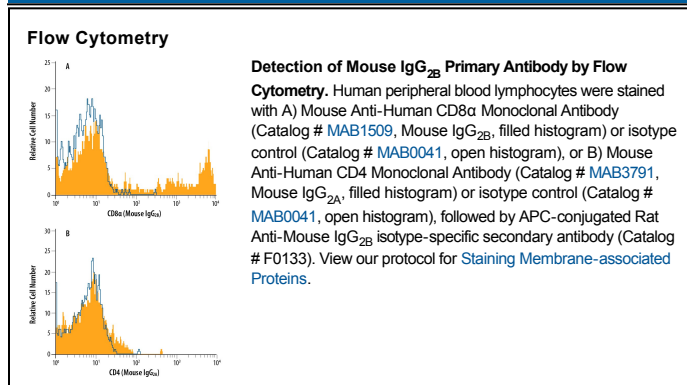
Species Reactivity	Mouse
Specificity	The specificity of this antibody was confirmed by direct ELISA on mouse IgG _{2B} monoclonal antibodies, and it does not cross-react with IgG ₁ , IgG _{2A} , IgG ₃ , IgM, IgA, or IgE antibodies. By flow cytometry, this isotype-specific secondary antibody detects primary antibodies of the mouse IgG _{2B} isotype, and does not detect primary antibodies of mouse IgG ₁ , IgG _{2A} , or IgG ₃ class.
Source	Monoclonal Rat IgG ₁ Clone # 332723
Purification	Protein A or G purified from hybridoma culture supernatant
Immunogen	Cocktail of mouse IgG _{2B} and IgG ₃
Conjugate	Allophycocyanin Excitation Wavelength: 620-650 nm Emission Wavelength: 660-670 nm
Formulation	Supplied in a saline solution containing BSA and Sodium Azide. See Certificate of Analysis for details. *Contains <0.1% Sodium Azide, which is not hazardous at this concentration according to GHS classifications. Refer to the Safety Data Sheet (SDS) for additional information and handling instructions.

APPLICATIONS

Please Note: Optimal dilutions should be determined by each laboratory for each application. *General Protocols* are available in the *Technical Information* section on our website.

	Recommended Concentration	Sample
Flow Cytometry	10 µL/10 ⁶ cells	See Below

DATA



PREPARATION AND STORAGE

Shipping	The product is shipped with polar packs. Upon receipt, store it immediately at the temperature recommended below.
Stability & Storage	Protect from light. Do not freeze. <ul style="list-style-type: none"> 12 months from date of receipt, 2 to 8 °C as supplied.