

## DESCRIPTION

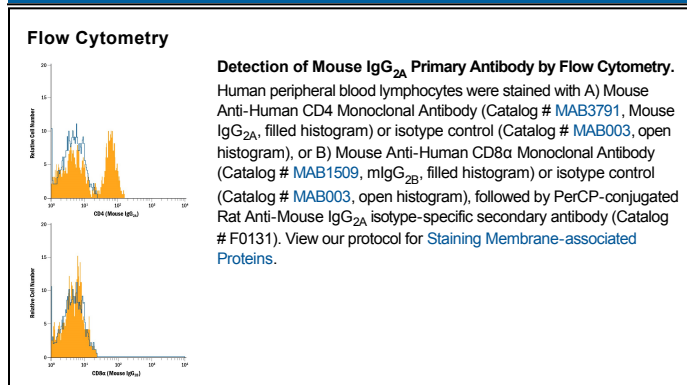
<b>Species Reactivity</b>	Mouse
<b>Specificity</b>	The specificity of this antibody was confirmed by direct ELISA on mouse IgG <sub>2A</sub> monoclonal antibodies, and it does not cross-react with IgG <sub>1</sub> , IgG <sub>2B</sub> , IgG <sub>3</sub> , IgM, IgA, or IgE antibodies. By flow cytometry, this isotype-specific secondary antibody detects primary antibodies of the mouse IgG <sub>2A</sub> isotype, and does not detect primary antibodies of mouse IgG <sub>1</sub> , IgG <sub>2B</sub> , or IgG <sub>3</sub> class.
<b>Source</b>	Monoclonal Rat IgG <sub>1</sub> Clone # 344701
<b>Purification</b>	Protein A or G purified from hybridoma culture supernatant
<b>Immunogen</b>	Cocktail of mouse IgG <sub>1</sub> and IgG <sub>2A</sub>
<b>Conjugate</b>	PerCP (Peridinin-chlorophyll Protein Complex) Excitation Wavelength: 482 and 564 nm Emission Wavelength: 675 nm
<b>Formulation</b>	Supplied in a saline solution containing BSA and Sodium Azide. See Certificate of Analysis for details.  *Contains <0.1% Sodium Azide, which is not hazardous at this concentration according to GHS classifications. Refer to the Safety Data Sheet (SDS) for additional information and handling instructions.

## APPLICATIONS

**Please Note:** Optimal dilutions should be determined by each laboratory for each application. *General Protocols* are available in the *Technical Information* section on our website.

	Recommended Concentration	Sample
<b>Flow Cytometry</b>	10 $\mu$ L/10 <sup>6</sup> cells	See Below

## DATA



## PREPARATION AND STORAGE

<b>Shipping</b>	The product is shipped with polar packs. Upon receipt, store it immediately at the temperature recommended below.
<b>Stability &amp; Storage</b>	<b>Protect from light. Do not freeze.</b> <ul style="list-style-type: none"> <li>12 months from date of receipt, 2 to 8 °C as supplied.</li> </ul>