

## DESCRIPTION

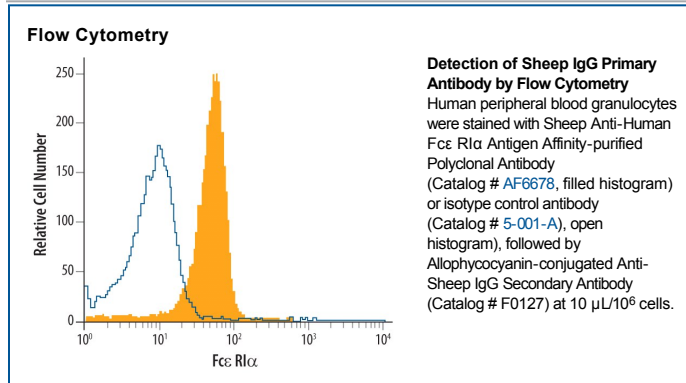
<b>Species Reactivity</b>	Sheep
<b>Specificity</b>	Sheep IgG specific IgG was purified by sheep IgG (H+L) affinity chromatography and absorbed against human IgG, and human, mouse, bovine, and rabbit serum to eliminate cross-reactivity.
<b>Source</b>	Polyclonal Donkey IgG
<b>Purification</b>	Antigen Affinity-purified
<b>Immunogen</b>	Sheep IgG
<b>Conjugate</b>	Allophycocyanin Excitation Wavelength: 620-650 nm Emission Wavelength: 660-670 nm
<b>Formulation</b>	Supplied in a saline solution containing BSA and Sodium Azide. See Certificate of Analysis for details.  *Contains <0.1% Sodium Azide, which is not hazardous at this concentration according to GHS classifications. Refer to the Safety Data Sheet (SDS) for additional information and handling instructions.

## APPLICATIONS

**Please Note:** Optimal dilutions should be determined by each laboratory for each application. *General Protocols* are available in the *Technical Information* section on our website.

<b>Flow Cytometry</b>	Designed for use as a secondary developing reagent in immunofluorescent assays, such as flow cytometry, where the primary antibody does not have a fluorescent reporter, is of sheep origin, and is of IgG class. The recommended concentration is 10 $\mu$ L/10 <sup>6</sup> cells.
-----------------------	--

## DATA



## PREPARATION AND STORAGE

<b>Shipping</b>	The product is shipped with polar packs. Upon receipt, store it immediately at the temperature recommended below.
<b>Stability &amp; Storage</b>	<b>Protect from light. Do not freeze.</b> <ul style="list-style-type: none"> <li>12 months from date of receipt, 2 to 8 °C as supplied.</li> </ul>