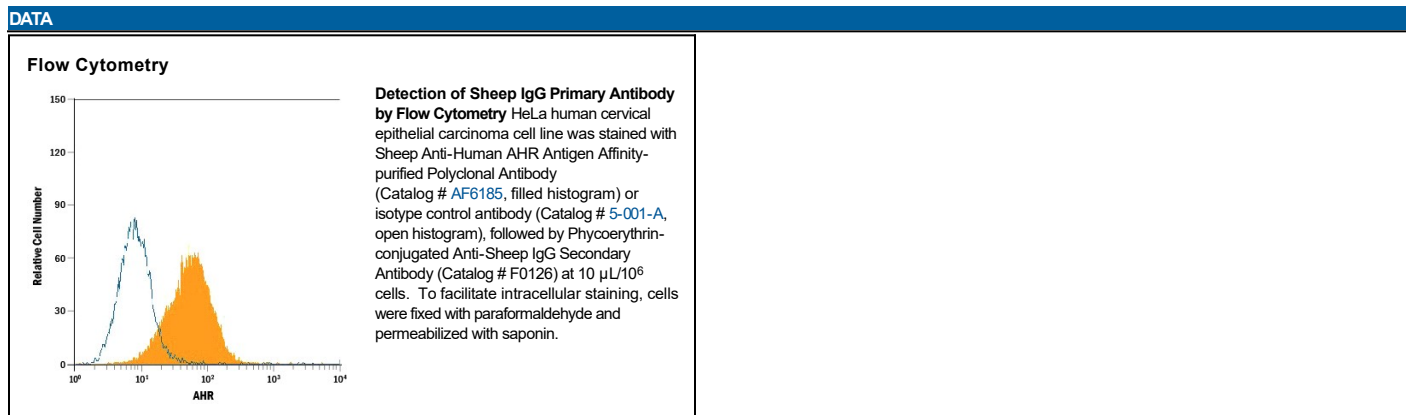


DESCRIPTION	
Species Reactivity	Sheep
Specificity	Sheep IgG specific IgG was purified by sheep IgG (H+L) affinity chromatography and absorbed against human IgG, and human, mouse, bovine, and rabbit serum to eliminate cross-reactivity.
Source	Polyclonal Donkey IgG
Purification	Antigen Affinity-purified
Immunogen	Sheep IgG
Conjugate	Phycoerythrin Excitation Wavelength: 488 nm Emission Wavelength: 565-605 nm
Formulation	Supplied in a saline solution containing BSA and Sodium Azide. See Certificate of Analysis for details. *Contains <0.1% Sodium Azide, which is not hazardous at this concentration according to GHS classifications. Refer to the Safety Data Sheet (SDS) for additional information and handling instructions.

APPLICATIONS	
Please Note: Optimal dilutions should be determined by each laboratory for each application. <i>General Protocols</i> are available in the <i>Technical Information</i> section on our website.	
Flow Cytometry	Designed for use as a secondary developing reagent in immunofluorescent assays, such as flow cytometry, where the primary antibody does not have a fluorescent reporter, is of sheep origin, and is of IgG class. The recommended concentration is 10 μ L/10 ⁶ cells.



PREPARATION AND STORAGE	
Shipping	The product is shipped with polar packs. Upon receipt, store it immediately at the temperature recommended below.
Stability & Storage	Protect from light. Do not freeze. <ul style="list-style-type: none"> ● 12 months from date of receipt, 2 to 8 °C as supplied.