

DESCRIPTION

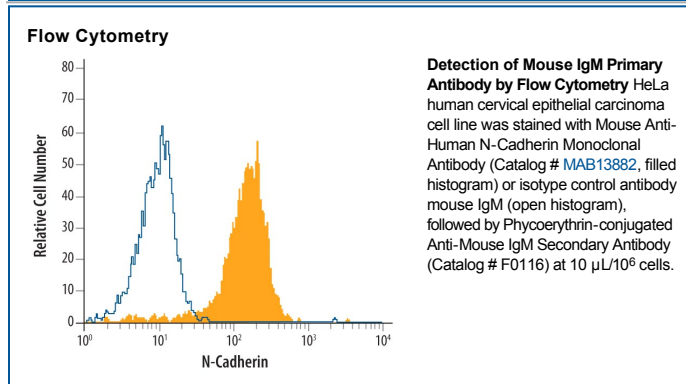
Species Reactivity	Mouse
Specificity	Mouse IgM specific IgG was purified by goat IgG affinity chromatography and then adsorbed to eliminate human cross reactivity. The IgG fraction was digested with pepsin to generate F(ab') ₂ fragments which have a reduced ability to interact with Fc receptors expressed on a variety of cells.
Source	Polyclonal Goat IgG
Purification	Antigen Affinity-purified
Immunogen	Mouse IgM
Conjugate	Phycoerythrin Excitation Wavelength: 488 nm Emission Wavelength: 565-605 nm
Formulation	Supplied in a saline solution containing BSA and Sodium Azide. See Certificate of Analysis for details. *Contains <0.1% Sodium Azide, which is not hazardous at this concentration according to GHS classifications. Refer to the Safety Data Sheet (SDS) for additional information and handling instructions.

APPLICATIONS

Please Note: Optimal dilutions should be determined by each laboratory for each application. *General Protocols* are available in the *Technical Information* section on our website.

Flow Cytometry Designed for use as a secondary developing reagent in immunofluorescent assays, such as flow cytometry, where the primary antibody does not have a fluorescent reporter, is of mouse origin, and is of the IgM class. The recommended concentration is 10 µL/10⁶ cells.

DATA



PREPARATION AND STORAGE

Shipping	The product is shipped with polar packs. Upon receipt, store it immediately at the temperature recommended below.
Stability & Storage	Protect from light. Do not freeze. <ul style="list-style-type: none"> ● 12 months from date of receipt, 2 to 8 °C as supplied.