

DESCRIPTION

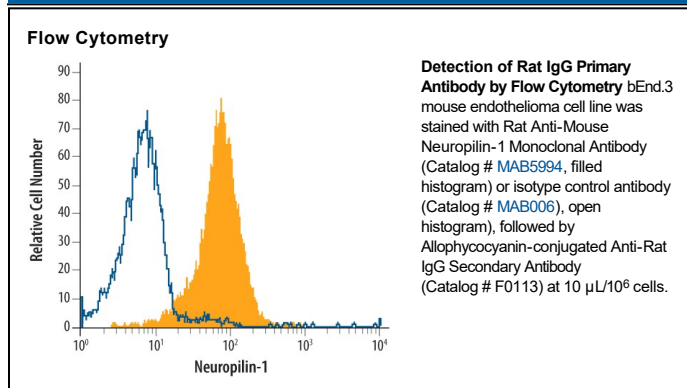
Species Reactivity	Rat
Specificity	Detects rat IgG primary antibodies in immunofluorescent assays. After purification by affinity chromatography, this antibody was adsorbed to eliminate mouse cross-reactivity and the IgG fraction was further digested with pepsin to generate F(ab) ₂ fragments which have reduced interactions with cell surface Fc receptors.
Source	Polyclonal Goat IgG
Purification	Antigen Affinity-purified
Immunogen	Rat IgG heavy and light chains
Conjugate	Allophycocyanin Excitation Wavelength: 620-650 nm Emission Wavelength: 660-670 nm
Formulation	Supplied in a saline solution containing BSA and Sodium Azide. See Certificate of Analysis for details. *Contains <0.1% Sodium Azide, which is not hazardous at this concentration according to GHS classifications. Refer to the Safety Data Sheet (SDS) for additional information and handling instructions.

APPLICATIONS

Please Note: Optimal dilutions should be determined by each laboratory for each application. *General Protocols* are available in the *Technical Information* section on our website.

Flow Cytometry Designed for use as a secondary developing reagent in immunofluorescent assays, such as flow cytometry, where the primary antibody does not have a fluorescent reporter, is of rat origin, and is of IgG class. The recommended concentration is 10 μL/10⁶ cells.

DATA



PREPARATION AND STORAGE

Shipping The product is shipped with polar packs. Upon receipt, store it immediately at the temperature recommended below.

Stability & Storage **Protect from light. Do not freeze.**

- 12 months from date of receipt, 2 to 8 °C as supplied.