

## DESCRIPTION

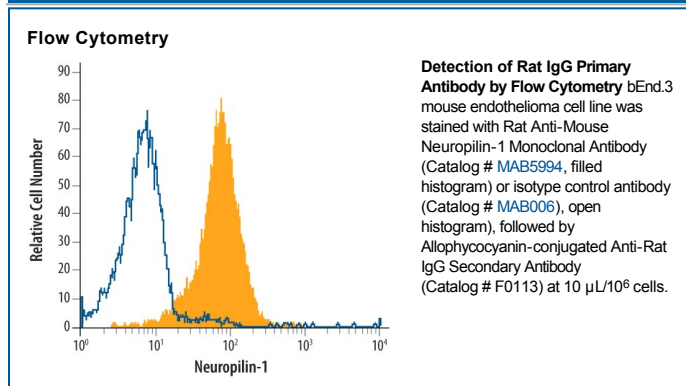
<b>Species Reactivity</b>	Rat
<b>Specificity</b>	Detects rat IgG primary antibodies in immunofluorescent assays. After purification by affinity chromatography, this antibody was adsorbed to eliminate mouse cross-reactivity and the IgG fraction was further digested with pepsin to generate F(ab') <sub>2</sub> fragments which have reduced interactions with cell surface Fc receptors.
<b>Source</b>	Polyclonal Goat IgG
<b>Purification</b>	Antigen Affinity-purified
<b>Immunogen</b>	Rat IgG heavy and light chains
<b>Conjugate</b>	Allophycocyanin Excitation Wavelength: 620-650 nm Emission Wavelength: 660-670 nm
<b>Formulation</b>	Supplied in a saline solution containing BSA and Sodium Azide. See Certificate of Analysis for details.  *Contains <0.1% Sodium Azide, which is not hazardous at this concentration according to GHS classifications. Refer to the Safety Data Sheet (SDS) for additional information and handling instructions.

## APPLICATIONS

**Please Note:** Optimal dilutions should be determined by each laboratory for each application. *General Protocols* are available in the *Technical Information* section on our website.

**Flow Cytometry**      Designed for use as a secondary developing reagent in immunofluorescent assays, such as flow cytometry, where the primary antibody does not have a fluorescent reporter, is of rat origin, and is of IgG class. The recommended concentration is 10 μL/10<sup>6</sup> cells.

## DATA



## PREPARATION AND STORAGE

<b>Shipping</b>	The product is shipped with polar packs. Upon receipt, store it immediately at the temperature recommended below.
<b>Stability &amp; Storage</b>	<b>Protect from light. Do not freeze.</b> <ul style="list-style-type: none"> <li>● 12 months from date of receipt, 2 to 8 °C as supplied.</li> </ul>