

DESCRIPTION

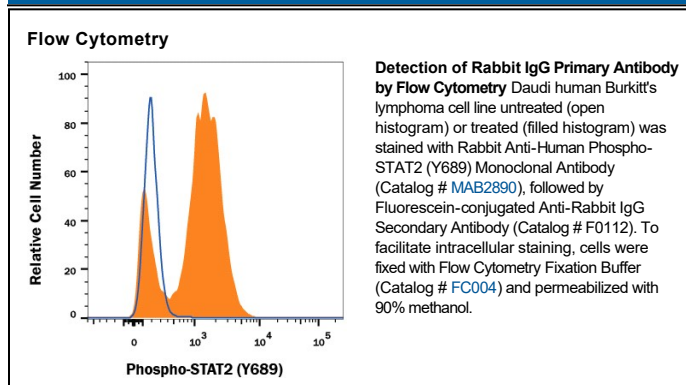
Species Reactivity	Rabbit
Specificity	Rabbit IgG specific IgG was purified by rabbit IgG affinity chromatography.
Source	Polyclonal Goat IgG
Purification	Antigen Affinity-purified
Immunogen	Rabbit IgG
Conjugate	Fluorescein Excitation Wavelength: 488 nm Emission Wavelength: 515-545 nm (FITC)
Formulation	Supplied in a saline solution containing BSA and Sodium Azide. See Certificate of Analysis for details. *Contains <0.1% Sodium Azide, which is not hazardous at this concentration according to GHS classifications. Refer to the Safety Data Sheet (SDS) for additional information and handling instructions.

APPLICATIONS

Please Note: Optimal dilutions should be determined by each laboratory for each application. General Protocols are available in the Technical Information section on our website.

Flow Cytometry	Designed for use as a secondary developing reagent in immunofluorescent assays, such as flow cytometry, where the primary antibody does not have a fluorescent reporter, is of rabbit origin, and is of IgG class. The recommended concentration is 10 μ L/10 ⁶ cells.
-----------------------	---

DATA



PREPARATION AND STORAGE

Shipping	The product is shipped with polar packs. Upon receipt, store it immediately at the temperature recommended below.
Stability & Storage	Protect from light. Do not freeze. ● 12 months from date of receipt, 2 to 8 °C as supplied.