

DESCRIPTION

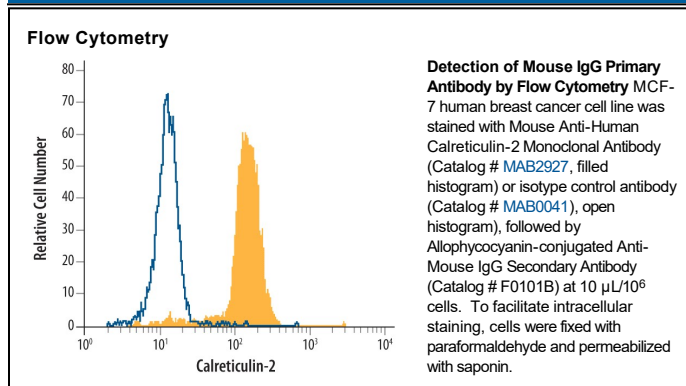
Species Reactivity	Mouse
Specificity	Detects mouse IgG primary antibodies in immunofluorescent assays. After purification by affinity chromatography, this antibody was adsorbed to eliminate human cross-reactivity and the IgG fraction was further digested with pepsin to generate F(ab') ₂ fragments which have reduced interactions with cell surface Fc receptors
Source	Polyclonal Goat IgG
Purification	Antigen Affinity-purified
Immunogen	Mouse IgG heavy and light chains
Conjugate	Allophycocyanin Excitation Wavelength: 620-650 nm Emission Wavelength: 660-670 nm
Formulation	Supplied in a saline solution containing BSA and Sodium Azide. See Certificate of Analysis for details. *Contains <0.1% Sodium Azide, which is not hazardous at this concentration according to GHS classifications. Refer to the Safety Data Sheet (SDS) for additional information and handling instructions.

APPLICATIONS

Please Note: Optimal dilutions should be determined by each laboratory for each application. *General Protocols* are available in the *Technical Information* section on our website.

Flow Cytometry	Designed for use as a secondary developing reagent in immunofluorescent assays, such as flow cytometry, where the primary antibody does not have a fluorescent reporter, is of mouse origin, and is of IgG class. The recommended concentration is 10 µL/10 ⁶ cells.
-----------------------	---

DATA



PREPARATION AND STORAGE

Shipping	The product is shipped with polar packs. Upon receipt, store it immediately at the temperature recommended below.
Stability & Storage	Protect from light. Do not freeze. <ul style="list-style-type: none"> ● 12 months from date of receipt, 2 to 8 °C as supplied.